



**WATCHDOG H3**  
WATERPROOFING

## Specifications

### Membrane Properties

| Resistance to Hydrostatic Head    | Results: 3' of water                                  | Method: ASTM D-5385              |
|-----------------------------------|---|----------------------------------|
| Type                              | Polymer-enhanced asphalt liquid-applied membrane      |                                  |
| Color                             | Black   |                                  |
| Solids                            | 64% ± 3% [percent by weight]                          |                                  |
| Density                           | 8.2 ± .15 lbs/gal                                     |                                  |
| Application                       | Airless spray   |                                  |
| Application Temperature           | Minimum 20°F  |                                  |
| Application Thickness             | 60 mils (wet) <sup>1</sup>                            |                                  |
| Typical Cure Time                 | 16-24 hrs [under normal conditions]                   |                                  |
| Adhesion to Concrete              | Results: Exceeds                                      | Method: ASTM C-836               |
| Elongation                        | Results: >1800%                                       | Method: ASTM D-412               |
| Crack Bridging Ability            | Results: Passes                                       | Method: ASTM C-836               |
| Water Vapor Permeance             | Results: <1 perm for 40-mil dry coating [grains/sthr] | Method: ASTM E-96 Wet Method     |
| Resistance to Degradation in Soil | Results: Good   | Method: ASTM E-154               |
| Mold Growth and Bacterial Attack  | Results: No degradation                               | Method: ASTM D-3273, ASTM D-3274 |

<sup>1</sup> Measured in-place with ASTM D-4414 notch film gauge, wetting the 60 mil tab. Membrane cures [dries] to 40 mils.

For more details on **WATCHDOG H3**, contact your local Barrier Solutions Contractor, call **800-DRY-BSMT** or visit **WATCHDOGWATERPROOFING.com**.

YOUR LOCAL BARRIER SOLUTIONS CONTRACTOR

**PERFORMANCE**  
**UNDER PRESSURE**



**WATCHDOG H3**  
WATERPROOFING

Now with up to **3 times** more hydrostatic head resistance!

**NEW!**

**WATCHDOG H3** waterproofing membrane introduces a higher level of protection against foundation wall leaks and seepage.

### 1. Hang Strength

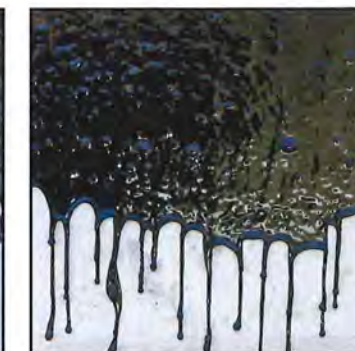
Enables Consistent Cured Membrane Thickness of 40 Mil

WATCHDOG H3 (left) and a competing asphalt emulsion waterproofing product (right) were sprayed on the same foundation wall to a thickness of about 60 mils wet. After 10 minutes, the new WATCHDOG H3 stayed in place, while the competitor's product ran down the wall. The superior hang strength of WATCHDOG H3 enables the membrane to maintain a constant thickness for maximum performance when it cures to 40 mils.

With little hang strength, the sagging competitor can't deliver the minimum code-required 40 mils of cured membrane. Equally important, that thin membrane cannot deliver any of their minimal published performance specifications.



WATCHDOG H3 hangs tough!



Competitive product slides away!



WATCHDOG H3 No Leaks! Competitive Product Leaks at less than 12" HH.

Membrane elongates to span a shrinkage crack, and effectively resists hydrostatic pressure.

### 2. Crack Bridging

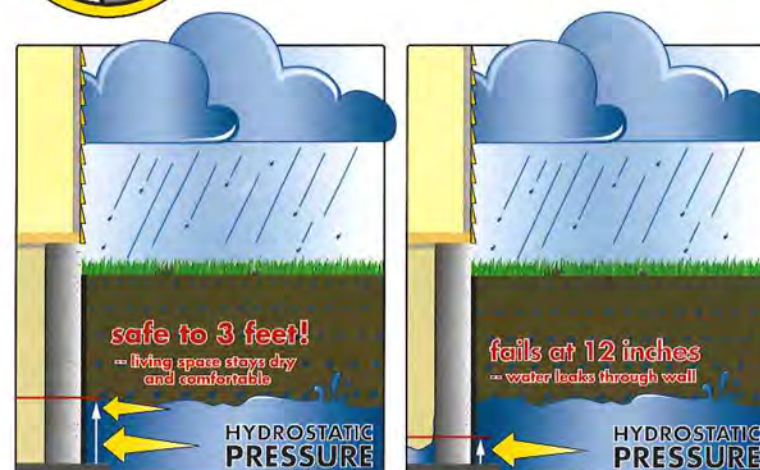
Waterproofing Must Resist Hydrostatic Pressure Even When Spanning Cracks in the Foundation Wall

WATCHDOG H3 (tube on left) and a competing waterproofing membrane (tube on right) were applied to 40 mils cured on identical sets of concrete blocks, then separated by 1/16" to simulate a typical shrinkage crack. A column of water was then placed on the portion of membrane spanning the crack to create hydrostatic head. The competitive product failed at 12 inches of hydrostatic head in less than 10 minutes, but WATCHDOG H3 remained leak-free, even with 3 feet of hydrostatic head.

### 3. Membrane Thickness = Performance

Proper Membrane Thickness Delivers Reliable Hydrostatic Head Resistance

At 40 mils, WATCHDOG H3 delivers 3 feet of hydrostatic head resistance. Competitors provide as little as 12" of hydrostatic resistance, even at 40-mil cured thickness. But with low hang strength, competitors may easily run down the wall and provide less than 40-mil thickness, leaving major portions of the wall unprotected.



WATCHDOG H3 Membrane

Competitive Membrane

| Thickness (cured mils) | Hydrostatic Head (inches) |            | Performance Factor |
|------------------------|---------------------------|------------|--------------------|
|                        | WATCHDOG H3               | Competitor |                    |
| 40 mils                | 36"                       | 12"        | <b>3x</b>          |
| 35 mils                | 28.8"                     | 9.6"       |                    |
| 30 mils                | 21.6"                     | 7.2"       |                    |

Hydrostatic resistance, as well as other published performance specifications, decline significantly with reduced thickness.



WATCHDOG H3 stays where it's sprayed to maintain consistent coverage of 40 mils cured and deliver hydrostatic head resistance up to 3 times greater than other asphalt emulsion waterproofing products. WATCHDOG H3 is so reliable, it's backed by a 10-year transferable warranty.\*

\*For complete warranty details, visit [WATCHDOGWATERPROOFING.com](http://WATCHDOGWATERPROOFING.com).