

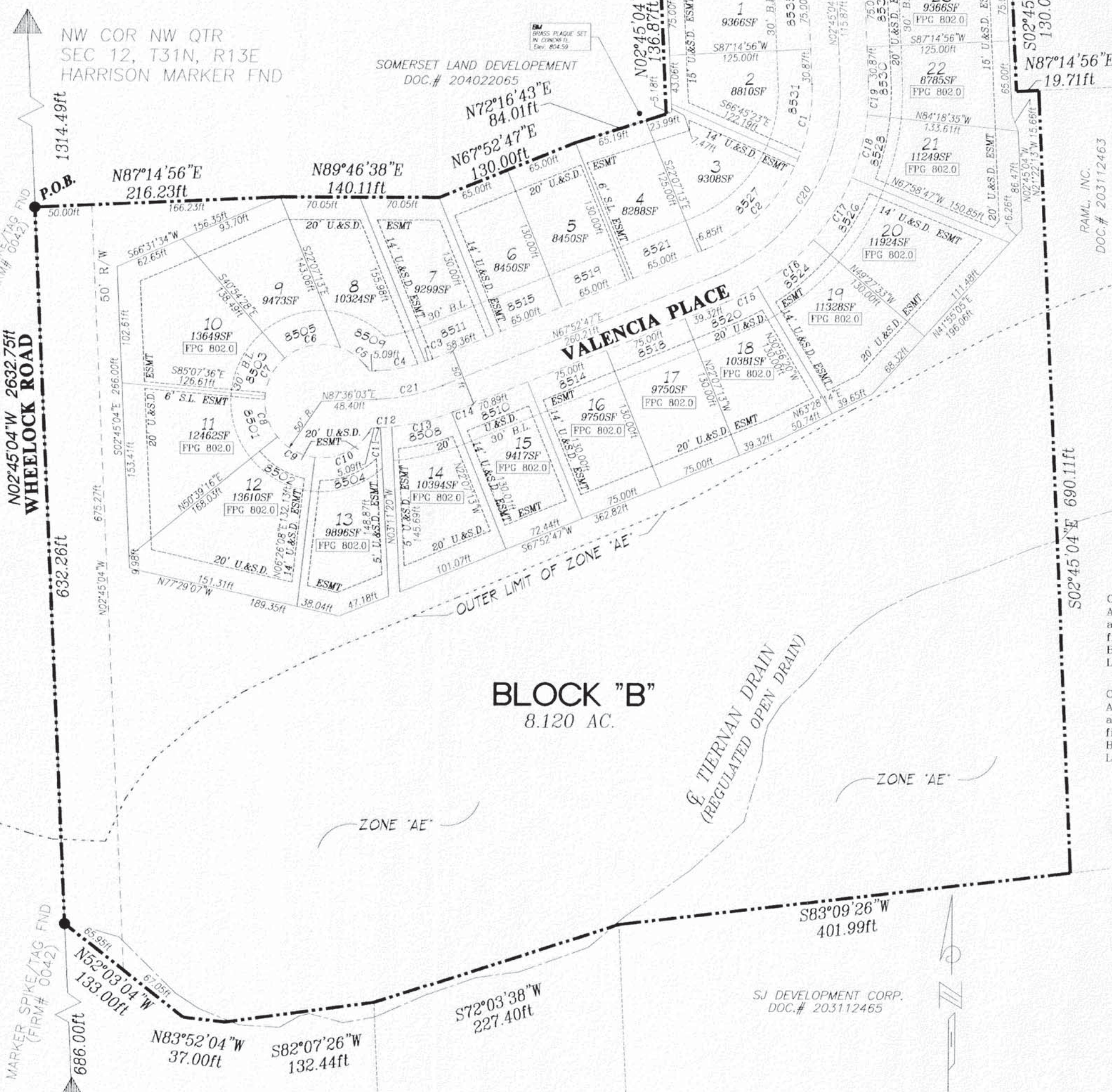
THE VILLAS AT FOXWOOD

ALL RIGHTS AND INTERESTS RESERVED (MUST BEAR) USE IN ROUTE) FROM INTERSECTION OF BROADWAY AND LINCOLN HIGHWAY STREET IN NEW HAVEN, THENCE 0.35 MILE W ALONG NO. 37 INDIANA HWY. TO 10-FOOT CONCRETE BRIDGE AND THE MARK ON RIGHT, ABOUT 120 YARDS W OF WHEELLOCK ROAD OR THE SW CORNER OF A CEMETERY, 23 FEET N OF CENTER LINE OF 24-FOOT ASPHALT HIGHWAY, ABOUT LEVEL WITH SAME, 0.6 FOOT N OF CONCRETE BANNISTER, SET IN A DRILL HOLE AT THE SE END OF THE NW WINGWALL. MARK IS 7.2 MILES SW OF SCHOOL AT HARLAN AND 8 OR 9 MILES ALONG NO. 37 HWY. E AND N FROM HEART OF FORT WAYNE. (NGVD 29)

BLOCK "A"
0.043 AC.

SOMERSET LAND DEVELOPMENT
DOC.# 204022065

N87°14'56"E 310.00ft



BLOCK "B"
8.120 AC.

SJ DEVELOPMENT CORP.
DOC.# 203112465

S83°09'26"W
401.99ft

ERVIN E EVARD
DOC.# 200030815



Scale 1" = 60'
NOVEMBER 15, 2004

NW COR NW QTR
SEC 12, T31N, R13E
HARRISON MARKER FND

N02°45'04"W 2632.75ft
WHEELLOCK ROAD

MARKER SPIKE/TAG FND
(FIRM# 0042)
N52°03'04"W
133.00ft

SW COR NW QTR
SEC 12, T31N, R13E
REBAR FND

KENNETH E. &
MARVINA M. LIECHTY

According to Flood Insurance Rate Map Number 18003C0110F with effective date of September

RAML, INC.
DOC.# 203112463

Cons
Allen
acco
file
Boar
Legal

LOT
NUM
C1
C2
C3
C4
C5
C6
C7
C8
C9
C10
C11
C12
C13
C14
C15
C16
C17
C18
C19

ROA
NUM
C20
C21