

STEVEN F. BURRIS AND  
SANDRA NILES BURRIS  
DOC# 89-034018

THOMAS LYNN &  
KARLA R. ELETT  
DOC#87-36747-8

JACQUELINE B. WERT  
DOC#87-059343

SUBDIVISION DEVELOPER:  
Pine View Land Corp.  
10808 La Cabresh Lane  
Fort Wayne, Indiana 46845  
Phone: (260)489-7095  
Fax: (260)489-7950

NICK PALERMO  
DOC#202017144

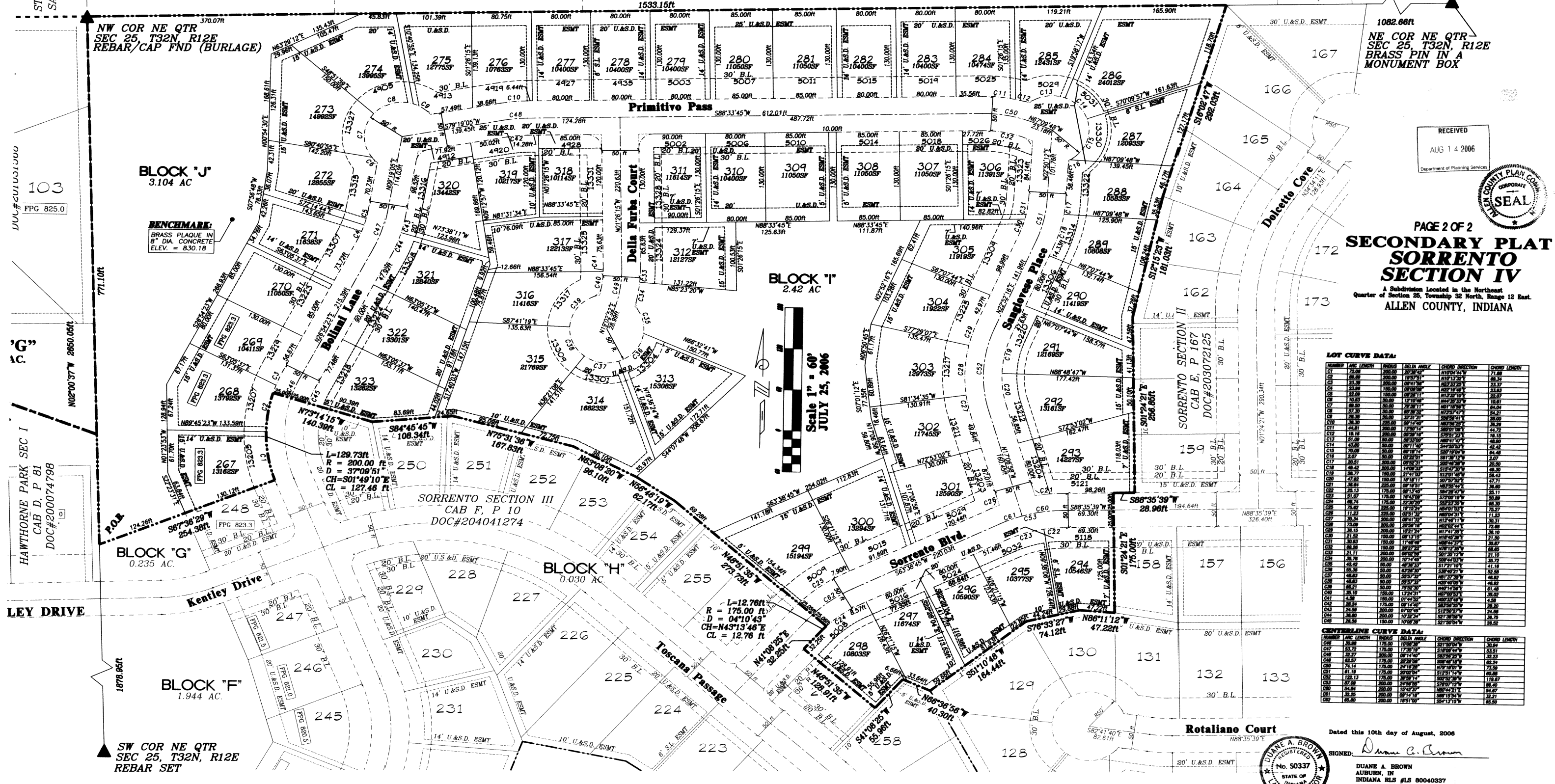
N88°33'45"E 2615.81ft

SUBDIVISION ENGINEER:  
**DABEC**  
D.A. Brown Engineering Consultants  
540 COUNTY ROAD 427, SUITE C, ALLEN, IN 46708  
PHONE: (260) 285-2020 FAX: (260) 285-2822

Plat Cab F Pg. 141

MICHAEL D. AND  
PAMELA ANN CASTLE  
DOC#9900068765

206056924  
Recorded  
09/19/2006 14:44:05  
RECORDED  
PATELLA J. CRONK  
ALLEN COUNTY, IN  
Recorder No. 20239  
Folio 1.00  
Page 1.00  
PLAT 3.00  
PLAT 3.00  
PLAT 3.00  
PLAT 3.00  
Total 48.00



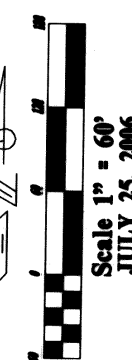
BLOCK "J"  
3.104 AC

BLOCK "I"  
2.42 AC

BLOCK "G"  
0.235 AC

BLOCK "H"  
0.030 AC

BLOCK "F"  
1.944 AC



RECEIVED  
AUG 14 2006  
Department of Planning Services



PAGE 2 OF 2  
**SECONDARY PLAT  
SORRENTO  
SECTION IV**  
A Subdivision Located in the Northeast  
Quarter of Section 25, Township 32 North, Range 12 East.  
ALLEN COUNTY, INDIANA

**LOT CURVE DATA:**

NUMBER	ARC LENGTH	RADIUS	DELTA ANGLE	CHORD DIRECTION	CHORD LENGTH
C01	72.29	200.00	207.24°	N10°04'44"W	71.88
C02	68.89	200.00	192.21°	N17°12'32"E	68.34
C03	23.29	200.00	08°04'14"E	N12°32'19"E	23.37
C04	23.29	200.00	08°04'14"E	N12°32'19"E	23.37
C05	18.03	200.00	08°04'14"E	N12°32'19"E	18.03
C06	68.89	200.00	192.21°	N17°12'32"E	68.34
C07	68.89	200.00	192.21°	N17°12'32"E	68.34
C08	68.89	200.00	192.21°	N17°12'32"E	68.34
C09	68.89	200.00	192.21°	N17°12'32"E	68.34
C10	68.89	200.00	192.21°	N17°12'32"E	68.34
C11	68.89	200.00	192.21°	N17°12'32"E	68.34
C12	68.89	200.00	192.21°	N17°12'32"E	68.34
C13	68.89	200.00	192.21°	N17°12'32"E	68.34
C14	68.89	200.00	192.21°	N17°12'32"E	68.34
C15	68.89	200.00	192.21°	N17°12'32"E	68.34
C16	68.89	200.00	192.21°	N17°12'32"E	68.34
C17	68.89	200.00	192.21°	N17°12'32"E	68.34
C18	68.89	200.00	192.21°	N17°12'32"E	68.34
C19	68.89	200.00	192.21°	N17°12'32"E	68.34
C20	68.89	200.00	192.21°	N17°12'32"E	68.34
C21	68.89	200.00	192.21°	N17°12'32"E	68.34
C22	68.89	200.00	192.21°	N17°12'32"E	68.34
C23	68.89	200.00	192.21°	N17°12'32"E	68.34
C24	68.89	200.00	192.21°	N17°12'32"E	68.34
C25	68.89	200.00	192.21°	N17°12'32"E	68.34
C26	68.89	200.00	192.21°	N17°12'32"E	68.34
C27	68.89	200.00	192.21°	N17°12'32"E	68.34
C28	68.89	200.00	192.21°	N17°12'32"E	68.34
C29	68.89	200.00	192.21°	N17°12'32"E	68.34
C30	68.89	200.00	192.21°	N17°12'32"E	68.34
C31	68.89	200.00	192.21°	N17°12'32"E	68.34
C32	68.89	200.00	192.21°	N17°12'32"E	68.34
C33	68.89	200.00	192.21°	N17°12'32"E	68.34
C34	68.89	200.00	192.21°	N17°12'32"E	68.34
C35	68.89	200.00	192.21°	N17°12'32"E	68.34
C36	68.89	200.00	192.21°	N17°12'32"E	68.34
C37	68.89	200.00	192.21°	N17°12'32"E	68.34
C38	68.89	200.00	192.21°	N17°12'32"E	68.34
C39	68.89	200.00	192.21°	N17°12'32"E	68.34
C40	68.89	200.00	192.21°	N17°12'32"E	68.34
C41	68.89	200.00	192.21°	N17°12'32"E	68.34
C42	68.89	200.00	192.21°	N17°12'32"E	68.34
C43	68.89	200.00	192.21°	N17°12'32"E	68.34
C44	68.89	200.00	192.21°	N17°12'32"E	68.34
C45	68.89	200.00	192.21°	N17°12'32"E	68.34
C46	68.89	200.00	192.21°	N17°12'32"E	68.34
C47	68.89	200.00	192.21°	N17°12'32"E	68.34
C48	68.89	200.00	192.21°	N17°12'32"E	68.34
C49	68.89	200.00	192.21°	N17°12'32"E	68.34
C50	68.89	200.00	192.21°	N17°12'32"E	68.34
C51	68.89	200.00	192.21°	N17°12'32"E	68.34
C52	68.89	200.00	192.21°	N17°12'32"E	68.34
C53	68.89	200.00	192.21°	N17°12'32"E	68.34
C54	68.89	200.00	192.21°	N17°12'32"E	68.34
C55	68.89	200.00	192.21°	N17°12'32"E	68.34
C56	68.89	200.00	192.21°	N17°12'32"E	68.34
C57	68.89	200.00	192.21°	N17°12'32"E	68.34
C58	68.89	200.00	192.21°	N17°12'32"E	68.34
C59	68.89	200.00	192.21°	N17°12'32"E	68.34
C60	68.89	200.00	192.21°	N17°12'32"E	68.34
C61	68.89	200.00	192.21°	N17°12'32"E	68.34
C62	68.89	200.00	192.21°	N17°12'32"E	68.34
C63	68.89	200.00	192.21°	N17°12'32"E	68.34
C64	68.89	200.00	192.21°	N17°12'32"E	68.34
C65	68.89	200.00	192.21°	N17°12'32"E	68.34
C66	68.89	200.00	192.21°	N17°12'32"E	68.34
C67	68.89	200.00	192.21°	N17°12'32"E	68.34
C68	68.89	200.00	192.21°	N17°12'32"E	68.34
C69	68.89	200.00	192.21°	N17°12'32"E	68.34
C70	68.89	200.00	192.21°	N17°12'32"E	68.34
C71	68.89	200.00	192.21°	N17°12'32"E	68.34
C72	68.89	200.00	192.21°	N17°12'32"E	68.34
C73	68.89	200.00	192.21°	N17°12'32"E	68.34
C74	68.89	200.00	192.21°	N17°12'32"E	68.34
C75	68.89	200.00	192.21°	N17°12'32"E	68.34
C76	68.89	200.00	192.21°	N17°12'32"E	68.34
C77	68.89	200.00	192.21°	N17°12'32"E	68.34
C78	68.89	200.00	192.21°	N17°12'32"E	68.34
C79	68.89	200.00	192.21°	N17°12'32"E	68.34
C80	68.89	200.00	192.21°	N17°12'32"E	68.34

**CENTRAL CURVE DATA:**

NUMBER	ARC LENGTH	RADIUS	DELTA ANGLE	CHORD DIRECTION	CHORD LENGTH
C01	30.88	175.00	109°08'51"	S21°30'00"W	30.88
C02	53.72	175.00	172°07'19"	S18°04'00"W	53.72
C03	62.57	175.00	202°09'00"	S08°19'00"W	62.57
C04	74.14	175.00	217°19'00"	S01°19'00"W	74.14
C05	81.19	175.00	225°00'00"	S00°00'00"W	81.19
C06	122.13	175.00	300°00'00"	S00°00'00"W	122.13
C07	87.20	200.00	270°00'00"	S00°00'00"W	87.20
C08	44.84	200.00	135°00'00"	S00°00'00"W	44.84
C09	32.25	200.00	07°14'18"	S00°00'00"W	32.25
C10	68.89	200.00	189°10'00"	S00°00'00"W	68.89

Dated this 10th day of August, 2006  
SIGNED: Duane A. Brown  
DUANE A. BROWN  
AUBURN, IN  
INDIANA RLS #LS 80040337

