

1/4
R12E
(lush)
story

Yarnelle

Doc.#86-052068

N 0°22'41" E
1287.58'

S 89°53'06" E
80.00'

POINT OF BEGINNING

13.55' Deed Gap

S 89°53'06" E
426.50'

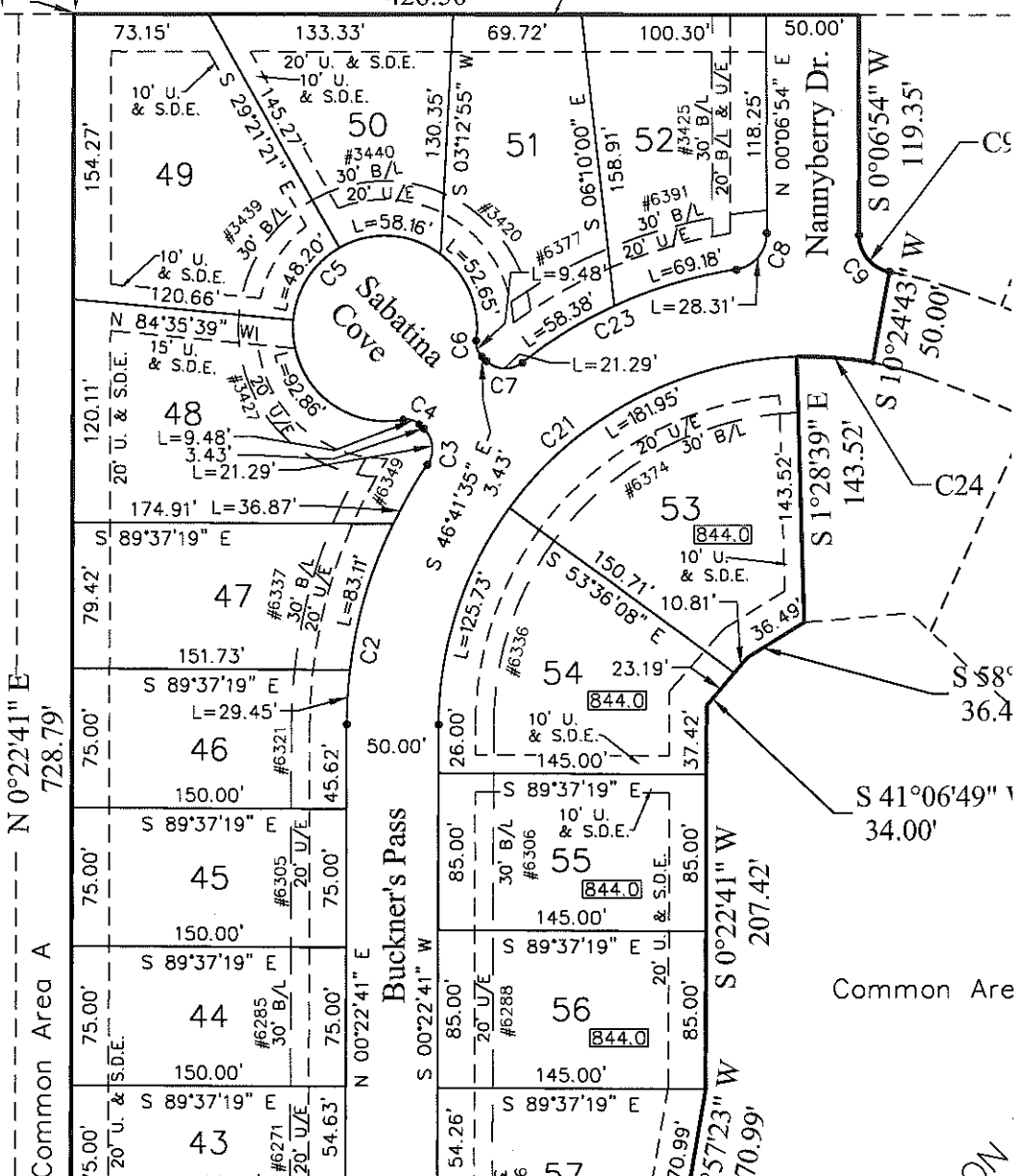
N. Line S. 50 Acres of the SW.1/4,
Sect.30,T31N,R12E

Flaugh Road

W. Line SW.1/4, Sect.30,T31N,R12E

N 0°22'41" E - 1203.06'

N 0°22'41" E
728.79'



Common Area

2A

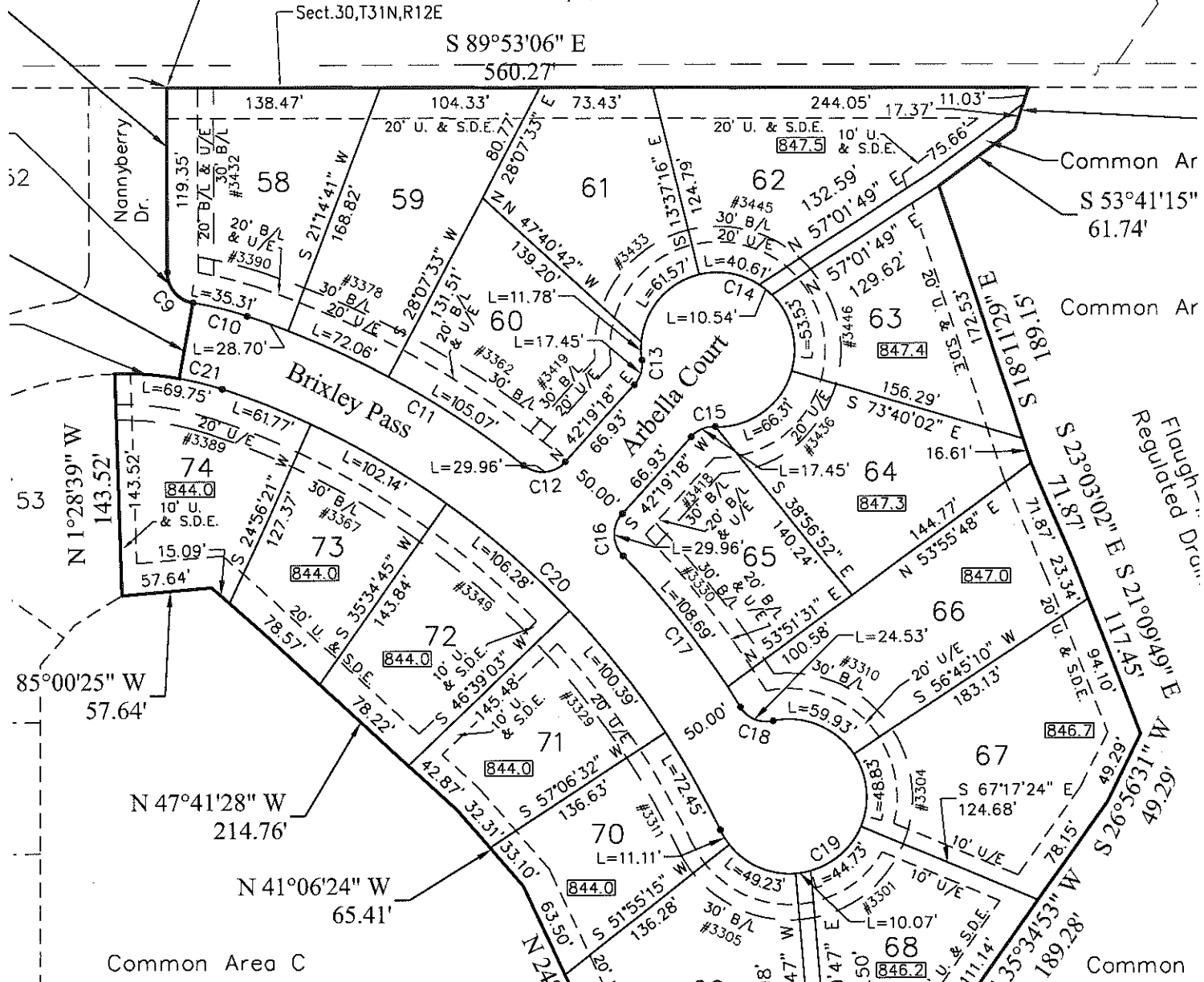
Yarnelle

c.#86-052068

POINT OF BEGINNING

N. Line S. 50 Acres of the SW.1/4,
Sect.30,T31N,R12E

S 89°53'06" E
560.27'



Common Ar
S 53°41'15"
61.74'

Common Ar

Flough
Regulated Dr.

Common Area C

Common