

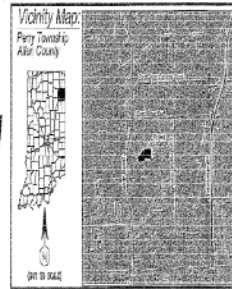
ANITA MATHER
ALLEN COUNTY RECORDER
FORT WAYNE, IN

Secondary Plat
Ridgewood at
Copper Creek - Section I

Developer:

North Eastern Development, Corp.
10808 La Cabraiah Lane
Fort Wayne, IN 46845
Tel: (260) 489-7095
Fax: (260) 489-7950

A Subdivision Located in the Northwest and
Northeast Quarters of Section 20,
Township 32 North, Range 12 East,
Allen County, Indiana



Approved this 15 day of November 2021

Allen County Council
Michael P. Hester, Mayor
Bryan Schaub, Deputy Mayor
Other council members listed with signatures.

Approved this 11 day of January 2021
Allen County Plat Commission Executive Committee

Allen County Commissioners: James Hester, Bryan Schaub, Dan Bales, William R. Brown, Robert E. Beck, Jr., Ed Jones, Alan County Commissioner, Jeff Hester.

Approved this 17 day of November 2021
Allen County Commission

Allen County Commission members: James Hester, Bryan Schaub, Dan Bales, William R. Brown, Robert E. Beck, Jr., Ed Jones, Alan County Commissioner, Jeff Hester.

North Eastern Development, Corp. and its officers: James Hester, Bryan Schaub, Dan Bales, William R. Brown, Robert E. Beck, Jr., Ed Jones, Alan County Commissioner, Jeff Hester.

Land Surveyor Certification: Duane A. Brown, P.E., State of Indiana, License No. 50337.

Subdivision Engineer: Duane A. Brown, P.E., State of Indiana, License No. 50337.

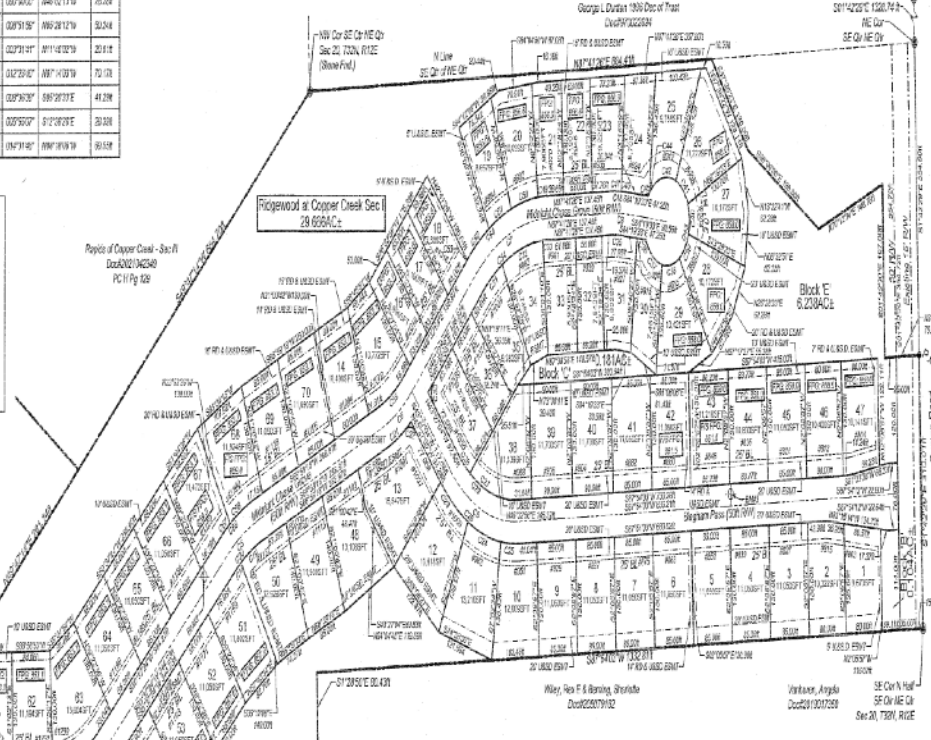
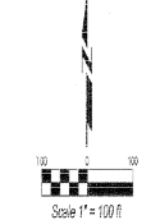
Document Prepared by Duane A. Brown P.E., P.S.

Curve Table with columns: Curve #, Length, Radius, Chord, Chord Direction, Chord Length. Contains data for curves C1 through C28.

Standard Drainage System... The Allen County Drainage District... The Allen County Drainage District... The Allen County Drainage District...

- Notes: 1. All Rights of Way... 2. All Rights of Way... 3. All Public... 4. All Public... 5. All Public... 6. All Public... 7. All Public... 8. All Public... 9. All Public... 10. All Public... 11. All Public... 12. All Public...

- 13. According to... 14. According to... 15. According to... 16. According to... 17. According to... 18. According to... 19. According to... 20. According to... 21. According to... 22. According to... 23. According to... 24. According to... 25. According to... 26. According to... 27. According to... 28. According to...



Legal Description: A tract of land located in the Northwest Quarter of Section 20, T32N, R12E, in Allen County, the State of Indiana... [Detailed description of the subdivision's location and boundaries].