

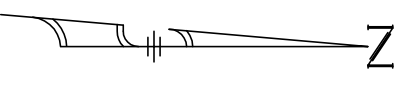
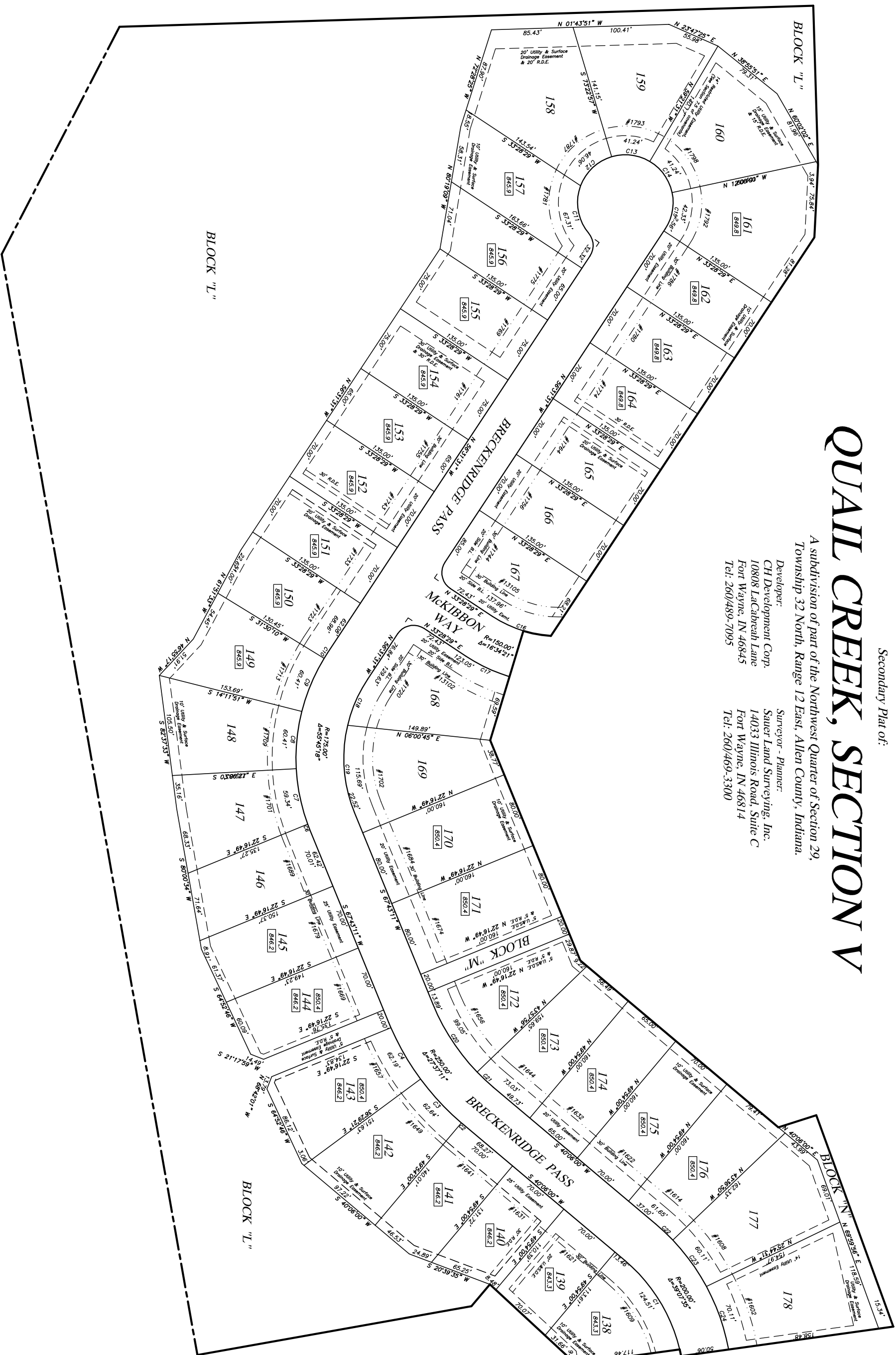
Secondary Plat of:

QUAIL CREEK, SECTION V

A subdivision of part of the Northwest Quarter of Section 29,
Township 32 North, Range 12 East, Allen County, Indiana.

Developer:
CH Development Corp.
10808 LacCairech Lane
Fort Wayne, IN 46845
Tel: 260/489-7095

Surveyor - Planner:
Sauer Land Surveying, Inc.
14033 Illinois Road, Suite C
Fort Wayne, IN 46814
Tel: 260/469-3300



SCALE IN FEET:

