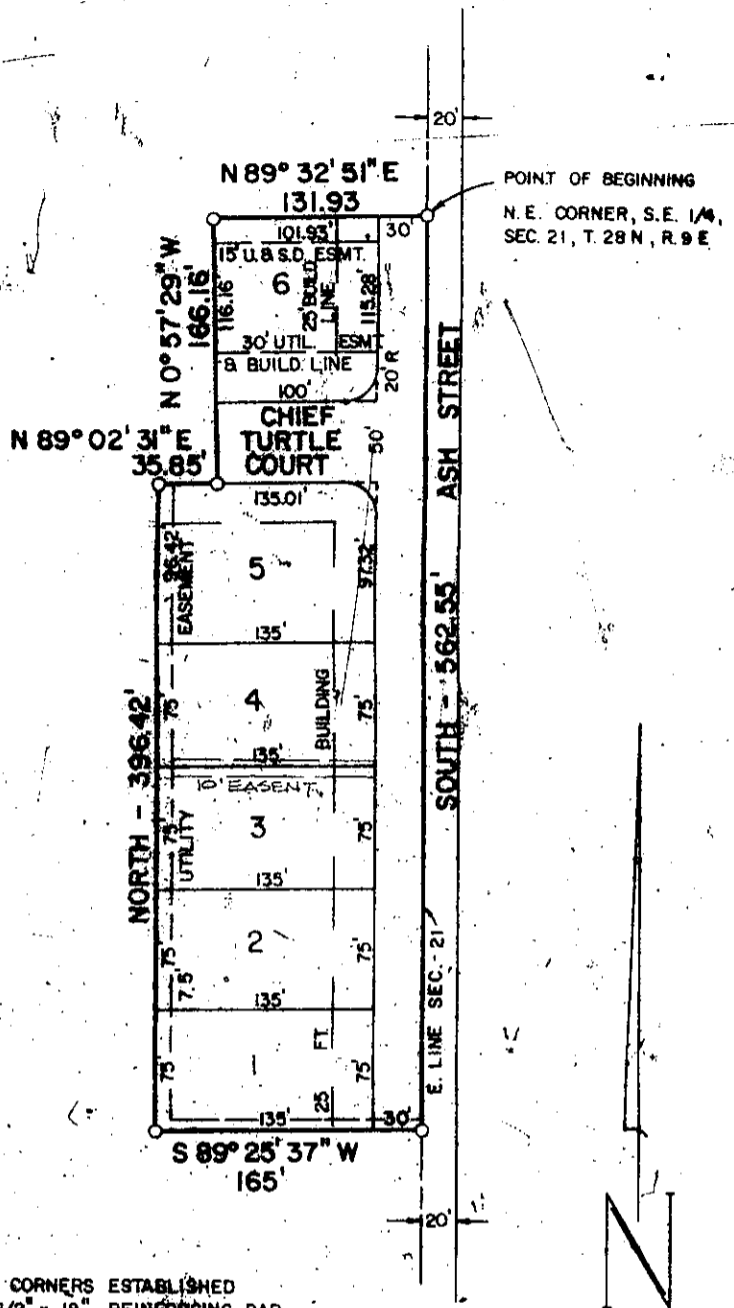


INDIAN RIDGE ON THE WABASH SECTION I



CITY PLAN COMMISSION:

James L. Wilson
PRESIDENT

SECRETARY

February 11, 1980

DEVELOPER

JAMES L. WILSON
520 CHERRY STREET
HUNTINGTON, INDIANA

NOTE ALL LOT CORNERS ESTABLISHED WITH A 1/2" x 18" REINFORCING BAR. 20FT. RADIUS ON ALL CORNER LOTS.

Duty entered for taxation this 9th day of April 1980

Bonnie J. Petro AUDITOR
HUNTINGTON CO. IND.

ENGINEER

J. L. RUSSELL ASSOC., INC.
5668 ST. JOE ROAD
FORT WAYNE, INDIANA

CERTIFICATION

I HEREBY CERTIFY THE ABOVE PLAT & SURVEY CORRECT THIS 28th DAY OF DECEMBER, 1979

RECEIVED FOR RECORD

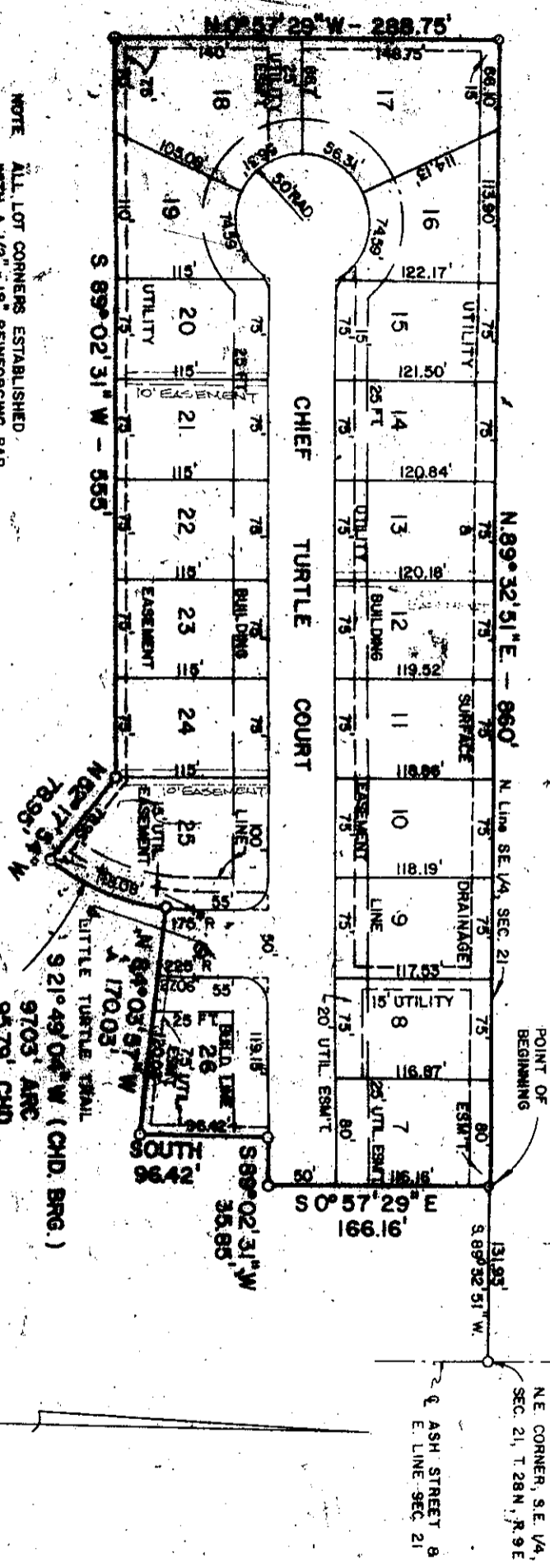
J. H. Wiley

James L. Russell
JAMES L. RUSSELL L.S. 11679



48

SECTION II



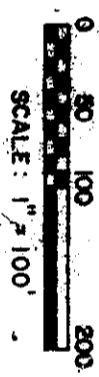
NOTE ALL LOT CORNERS ESTABLISHED WITH A 1/2" x 18" REINFORCING BAR. 20 FT. RADIUS ON ALL CORNER LOTS.

CITY PLAN COMMISSION

[Signature]
 J. L. RUSSELL
 ENGINEER
 RECEIVED FOR RECORD
 8/11/79
 RECORDER, HUNTINGTON CO., IN.

DEVELOPER
 JAMES L. WILSON
 520 CHERRY STREET
 HUNTINGTON, INDIANA

ENGINEER
 J. L. RUSSELL ASSOC., INC.
 5668 ST. JOE ROAD
 FORT WAYNE, INDIANA



CERTIFICATION

I HEREBY CERTIFY THE ABOVE PLAT & SURVEY CORRECT THIS 28th DAY OF DECEMBER, 1979

[Signature]
 JAMES L. RUSSELL, L.S. 11679



Examined for location this 9th day of April 1980
[Signature]
 AUDITOR
 HUNTINGTON CO. IND.