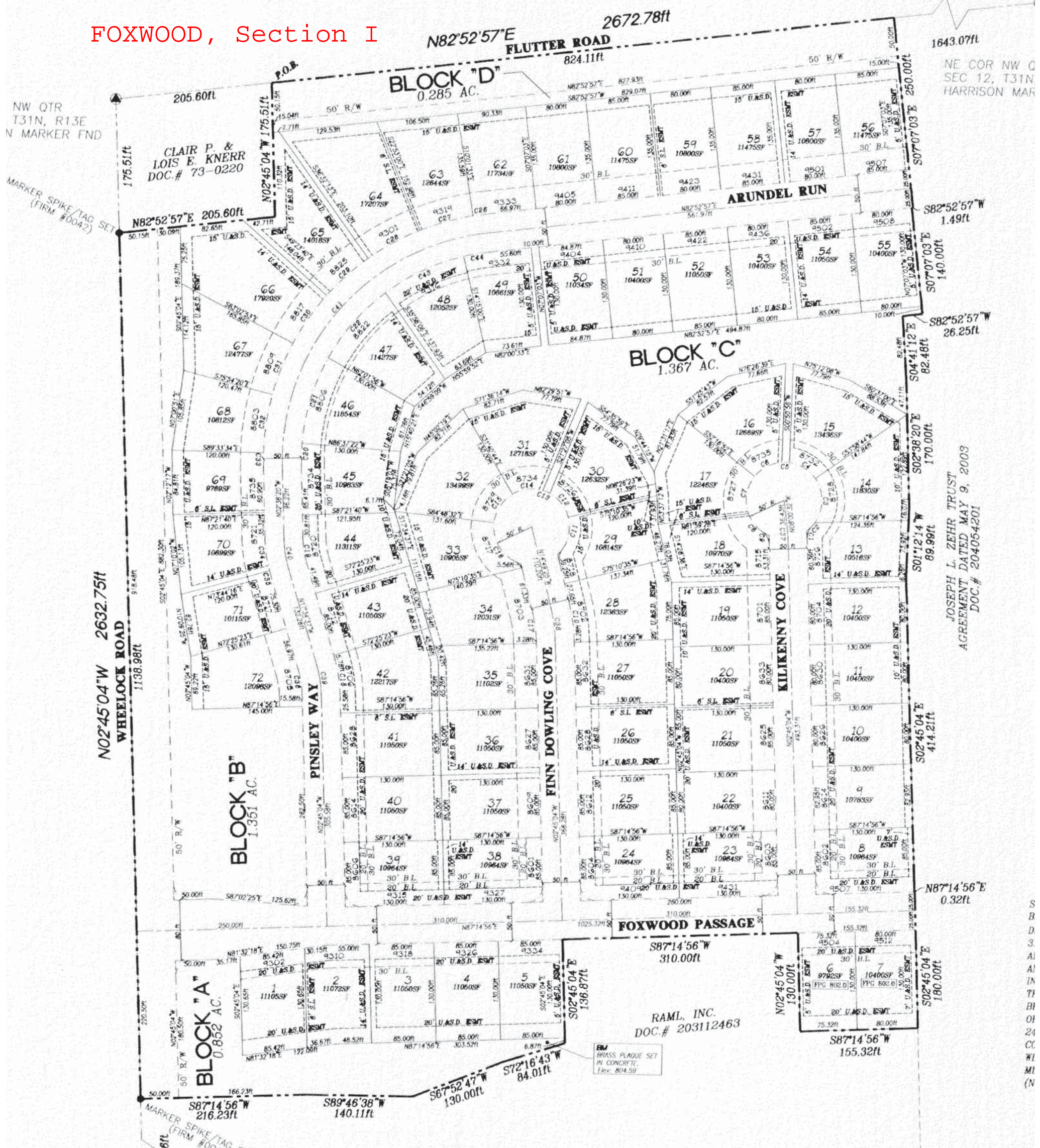


FOXWOOD, Section I



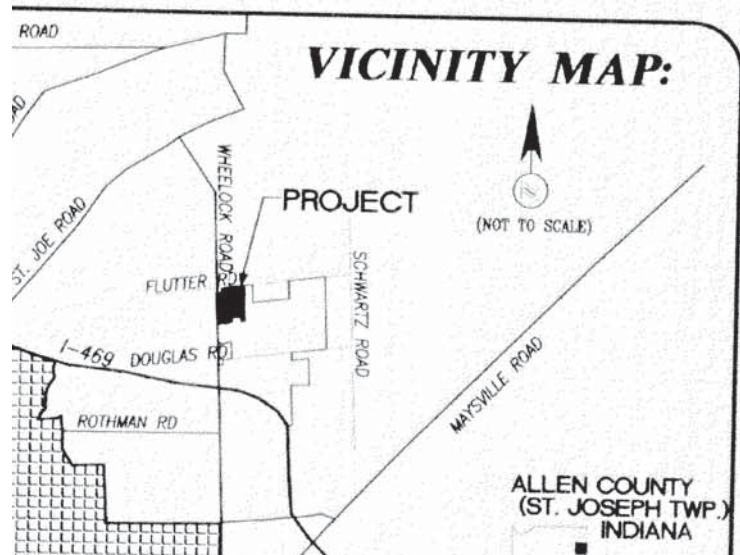
JOSEPH L. ZEHR TRUST
AGREEMENT DATED MAY 9, 2003
DOC.# 204054201

LOT CURVE DATA:

NUMBER	ARC LENGTH	RADIUS	DELTA ANGLE	CHORD DIRECTION	CHORD LENGTH
C1	9.11	175.00	02°58'58"	N04°14'33"W	9.11
C2	15.27	50.00	17°28'58"	N43°25'26"E	15.21
C3	81.85	50.00	70°41'41"	N00°40'26"W	57.85
C4	41.36	50.00	47°23'27"	N58°42'59"W	40.19
C5	10.02	50.00	11°28'42"	N89°09'04"W	10.00
C6	41.36	50.00	47°23'27"	S81°24'51"W	40.19
C7	51.53	50.00	59°03'06"	S08°11'33"W	49.28
C8	40.52	50.00	46°25'56"	S44°33'00"E	39.42
C9	4.71	125.00	02°00'25"	S03°49'46"E	4.71
C10	47.41	225.00	12°04'21"	N08°47'14"E	47.52
C11	53.29	50.00	81°03'52"	N1°38'39"E	50.80
C12	40.95	50.00	48°55'17"	N39°20'55"E	38.81
C13	10.02	50.00	11°28'42"	N68°32'55"W	10.00
C14	41.36	50.00	47°23'27"	S82°01'00"W	40.19
C15	46.36	50.00	53°07'48"	S31°45'22"W	44.72
C16	89.83	50.00	80°00'53"	S34°48'58"E	64.29
C17	36.87	175.00	12°04'21"	S08°47'14"E	36.81
C18	45.28	175.00	14°49'34"	N10°09'50"W	45.18
C19	32.59	125.00	14°58'17"	N10°06'29"W	32.50
C20	28.88	275.00	06°00'58"	N00°22'06"E	28.86
C21	118.03	275.00	24°35'26"	N15°40'21"E	117.12
C22	115.10	275.00	27°56'46"	N39°57'27"E	114.26
C23	16.50	325.00	02°54'20"	S81°25'42"W	16.49
C24	72.93	325.00	12°51'27"	S75°32'44"W	72.78
C25	77.45	325.00	13°39'13"	S67°17'24"W	77.27
C26	72.93	325.00	12°51'27"	S47°02'03"W	72.78
C27	77.45	325.00	13°39'13"	S33°46'43"W	77.27
C28	72.93	325.00	12°51'27"	S20°31'23"W	72.78
C29	77.45	325.00	13°39'13"	S07°16'03"W	77.27
C30	17.47	325.00	03°04'48"	S01°05'57"E	17.47
C31	41.61	175.00	13°37'24"	S06°27'02"E	41.61
C32	4.02	175.00	01°18'53"	S18°55'11"E	4.02
C33	32.35	125.00	14°49'34"	S10°00'50"E	32.26
C34	114.24	275.00	23°48'06"	N63°50'56"E	113.42
C35	34.23	275.00	07°07'57"	N79°18'58"E	34.21

ROAD CENTERLINE CURVE DATA:

NUMBER	ARC LENGTH	RADIUS	DELTA ANGLE	CHORD DIRECTION	CHORD LENGTH
C36	42.14	200.00	12°04'21"	S08°47'14"E	42.08
C37	38.81	150.00	14°49'34"	S10°09'50"E	38.71
C38	39.11	150.00	14°58'17"	N10°06'29"W	39.00
C39	447.79	300.00	86°31'17"	N40°07'18"E	407.36



According to 28, 1990 a lies in "011 outside the