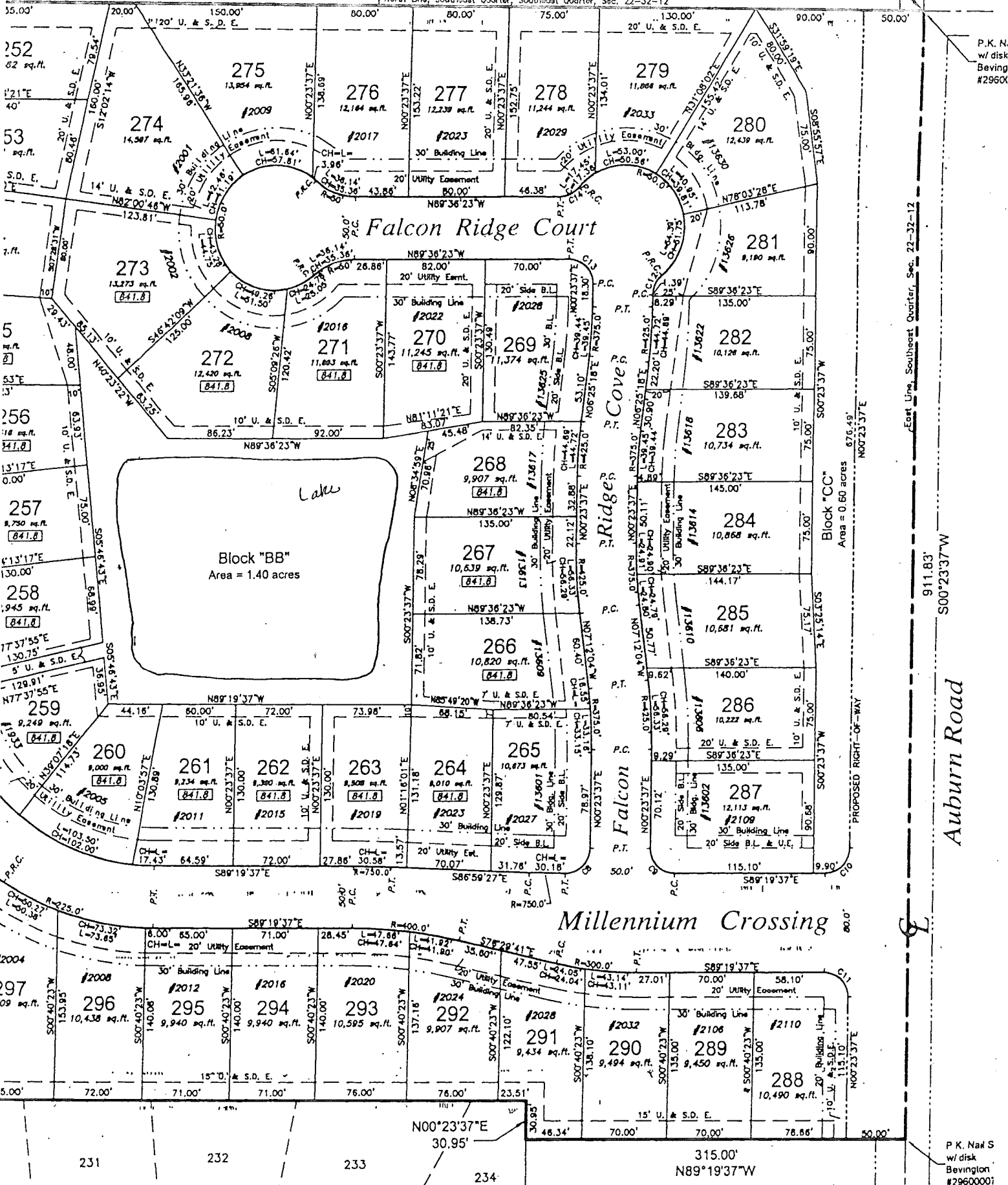


S89°16'22"E
1284.25'

N.E. corner
S.E. 1/4, S.E. 1/4,
Sec. 22-32-12

North Line, Southeast Quarter, Southeast Quarter, Sec. 22-32-12



P.K.N. w/disk Beving #2950X

East Line, Southeast Quarter, Sec. 22-32-12

911.83'

Auburn Road

P.K.N. w/disk Bevington #29600001

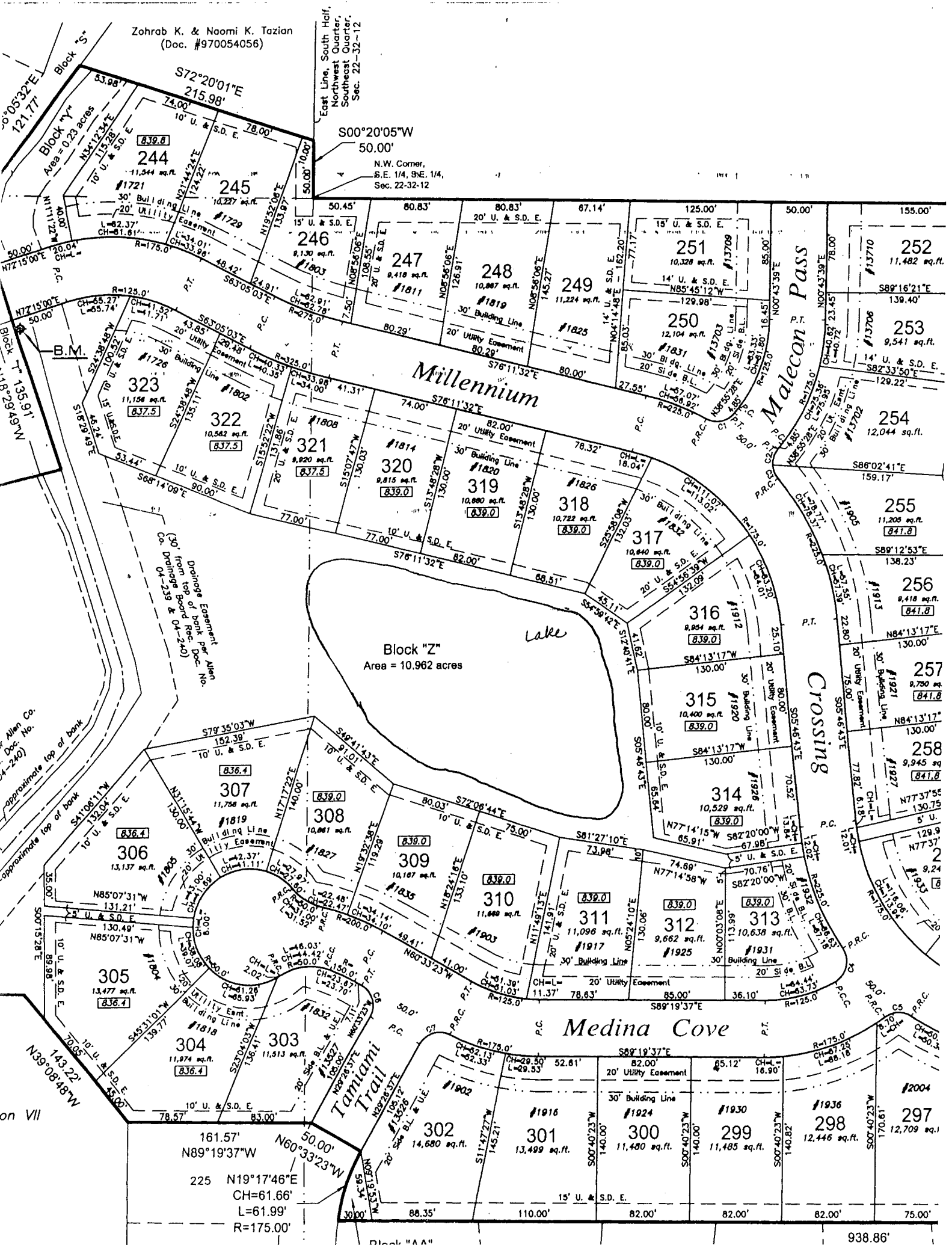
1.167 acres
David B. Johnson
(#201048184)

Union Chapel Road

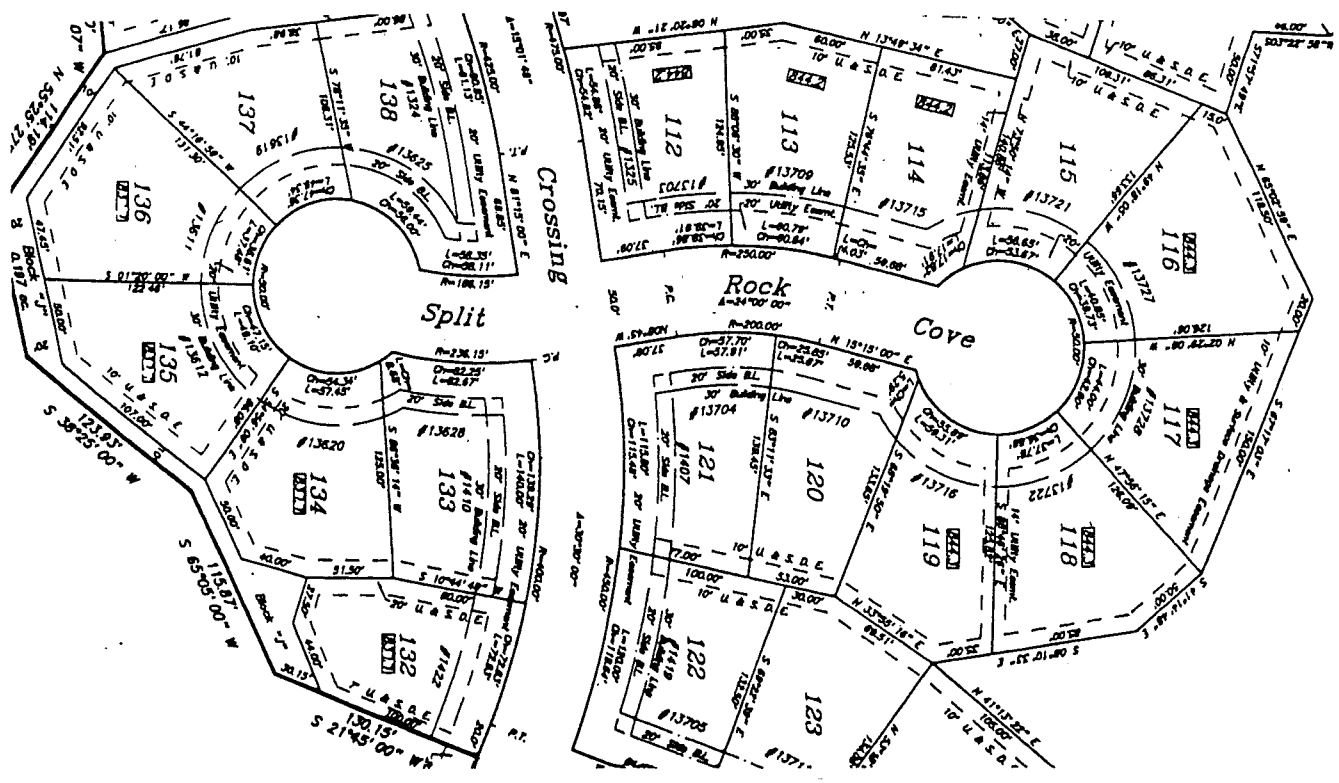
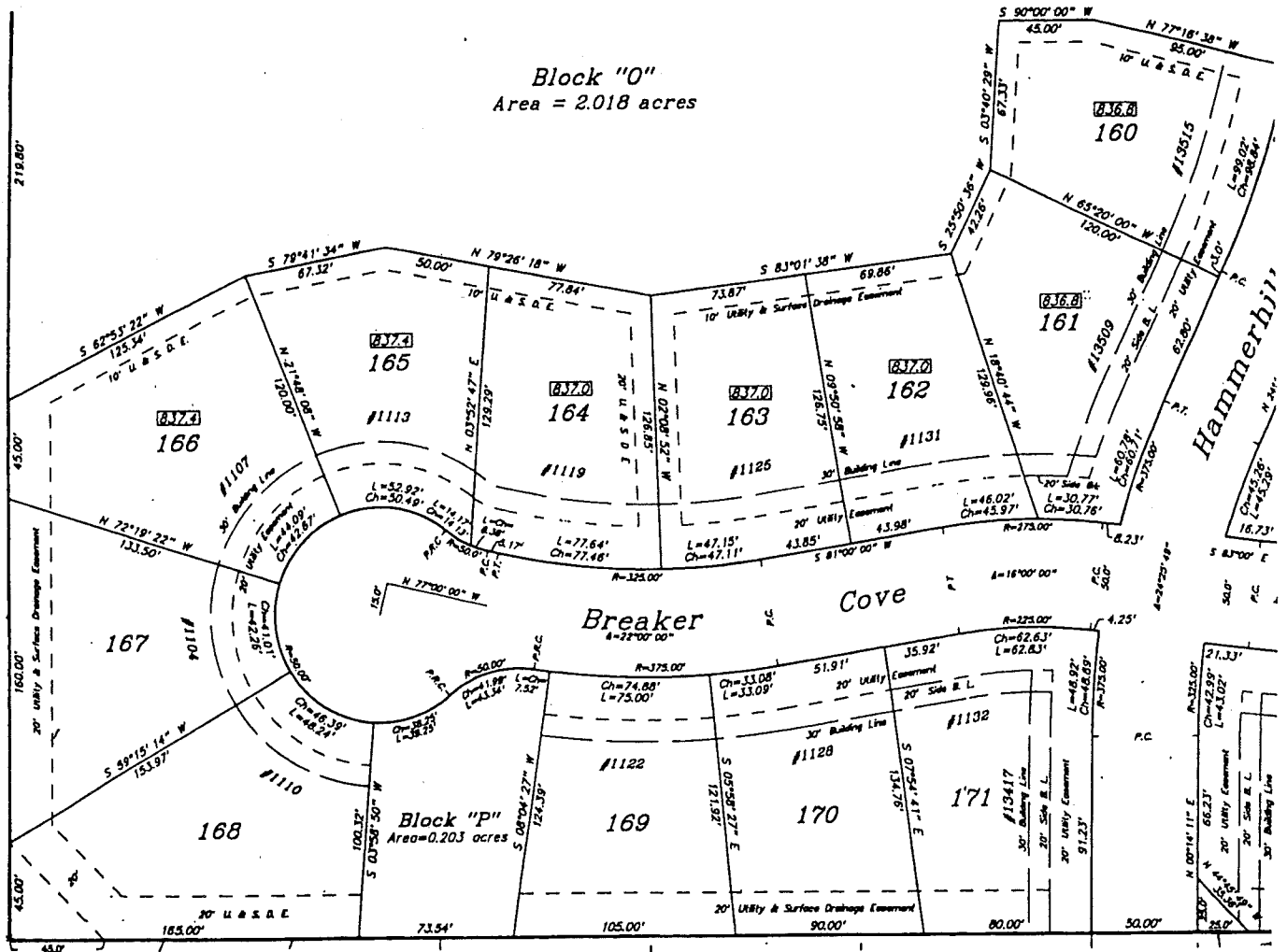
W
N
E
S

Zohrab K. & Naomi K. Tazian
(Doc. #970054056)

East Line, South Half,
Northwest Quarter,
Southeast Quarter,
Sec. 22-32-12



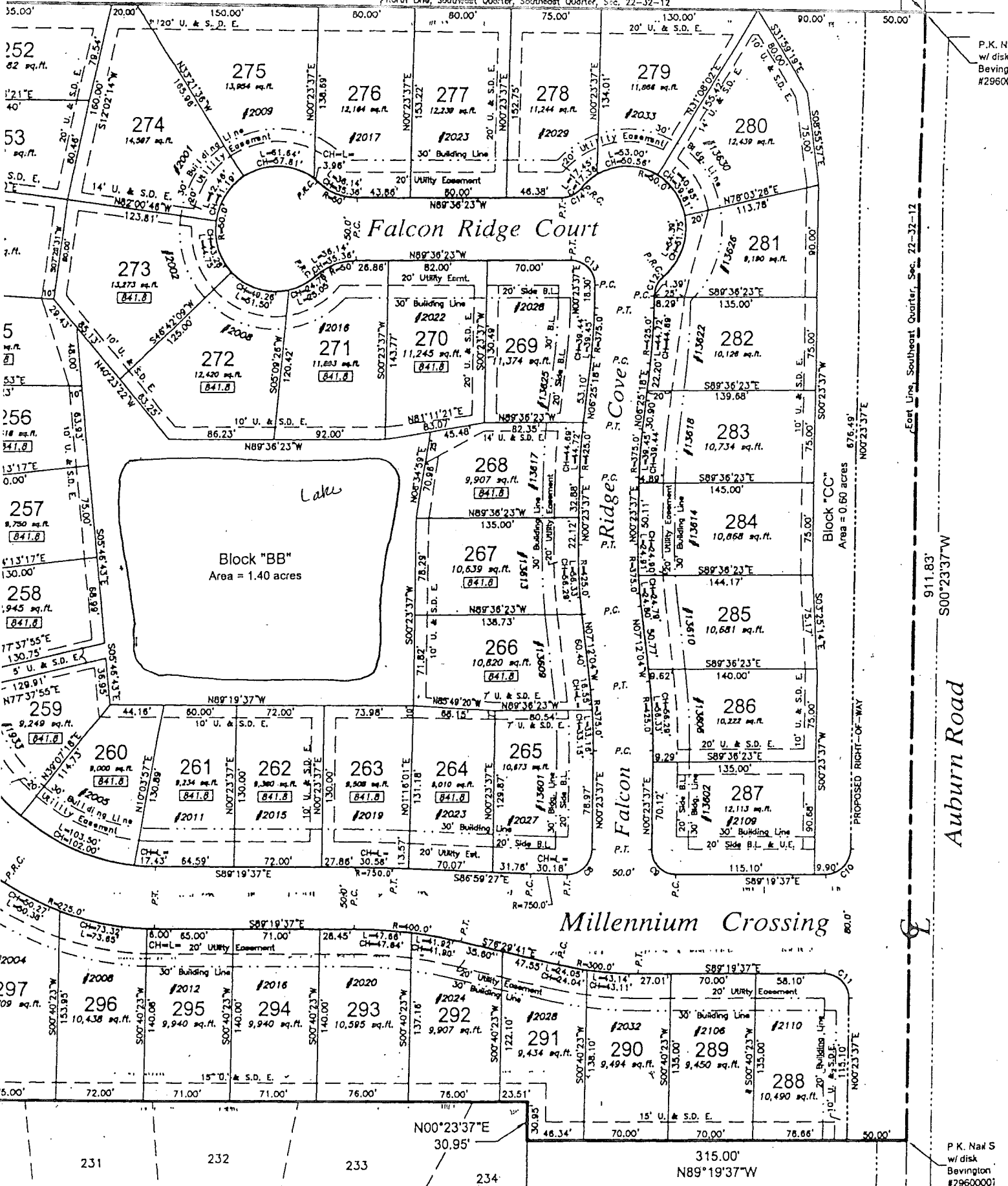
Block "O"
Area = 2.018 acres



S89°16'22"E
1284.25'

N.E. corner,
S.E. 1/4, S.E. 1/4,
Sec. 22-32-12

North Line, Southeast Quarter, Southeast Quarter, Sec. 22-32-12



P.K. N
w/ disk
Beving
#2960X

East Line, Southeast Quarter, Sec. 22-32-12

911.83'
S00°23'37"W

Auburn Road

P.K. Nal S
w/ disk
Bevington
#29600001

Falcon Ridge Court

Millennium Crossing

Block "BB"
Area = 1.40 acres

Block "CC"
Area = 0.60 acres

1.167 acres
David B. Johnson
(#201048184)

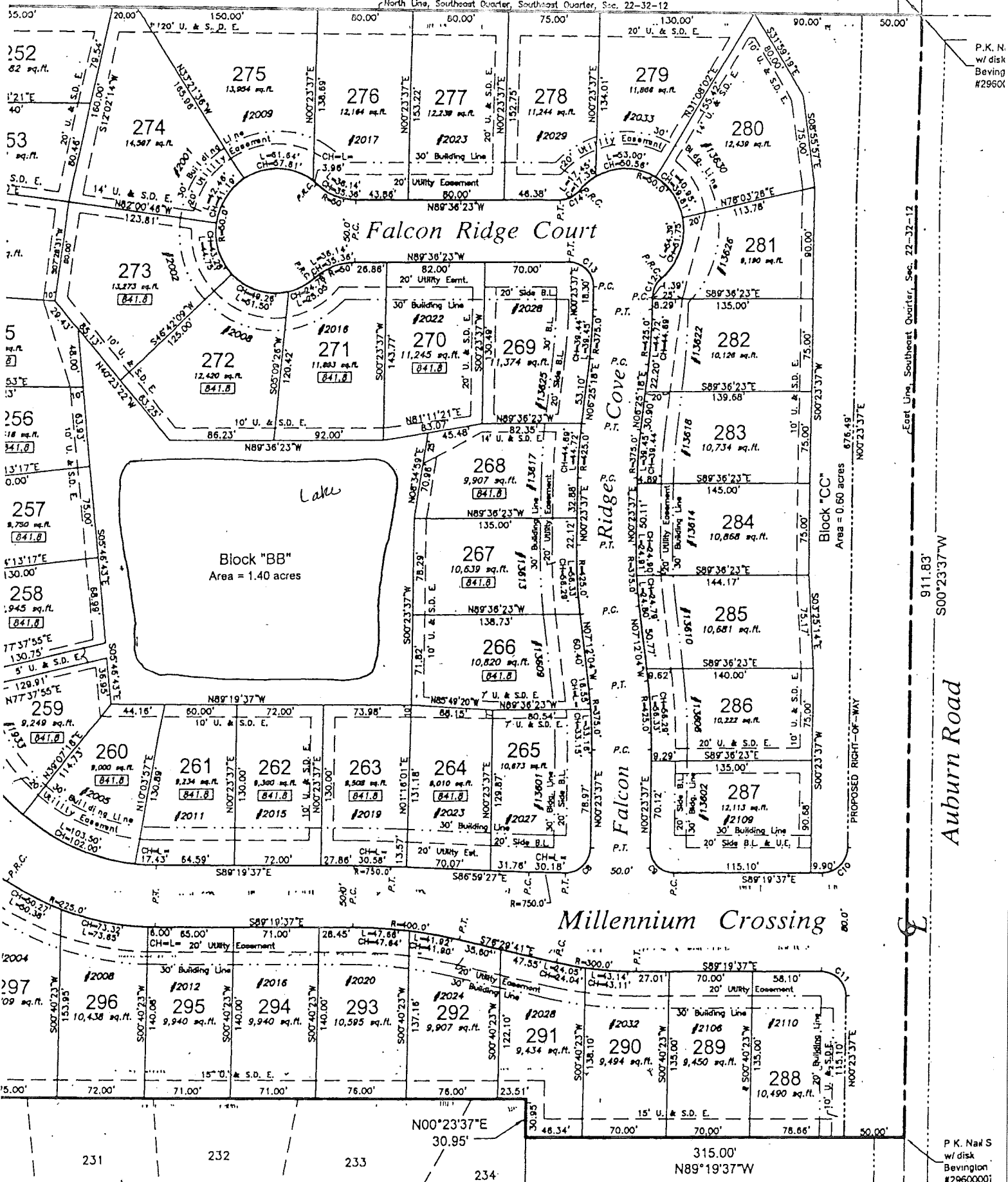
Union Chapel Road

W
N
E
S

S89°16'22"E
1284.25'

N.E. corner,
S.E. 1/4, S.E. 1/4,
Sec. 22-32-12

North Line, Southeast Quarter, Southeast Quarter, Sec. 22-32-12



P.K. N. w/ disk
Bevington
#2960X

911.83'
S00°23'37"W

Auburn Road

P.K. Nak S
w/ disk
Bevington
#29600001

1.167 acres
David B. Johnson
(#201048184)

Union Chapel Road

