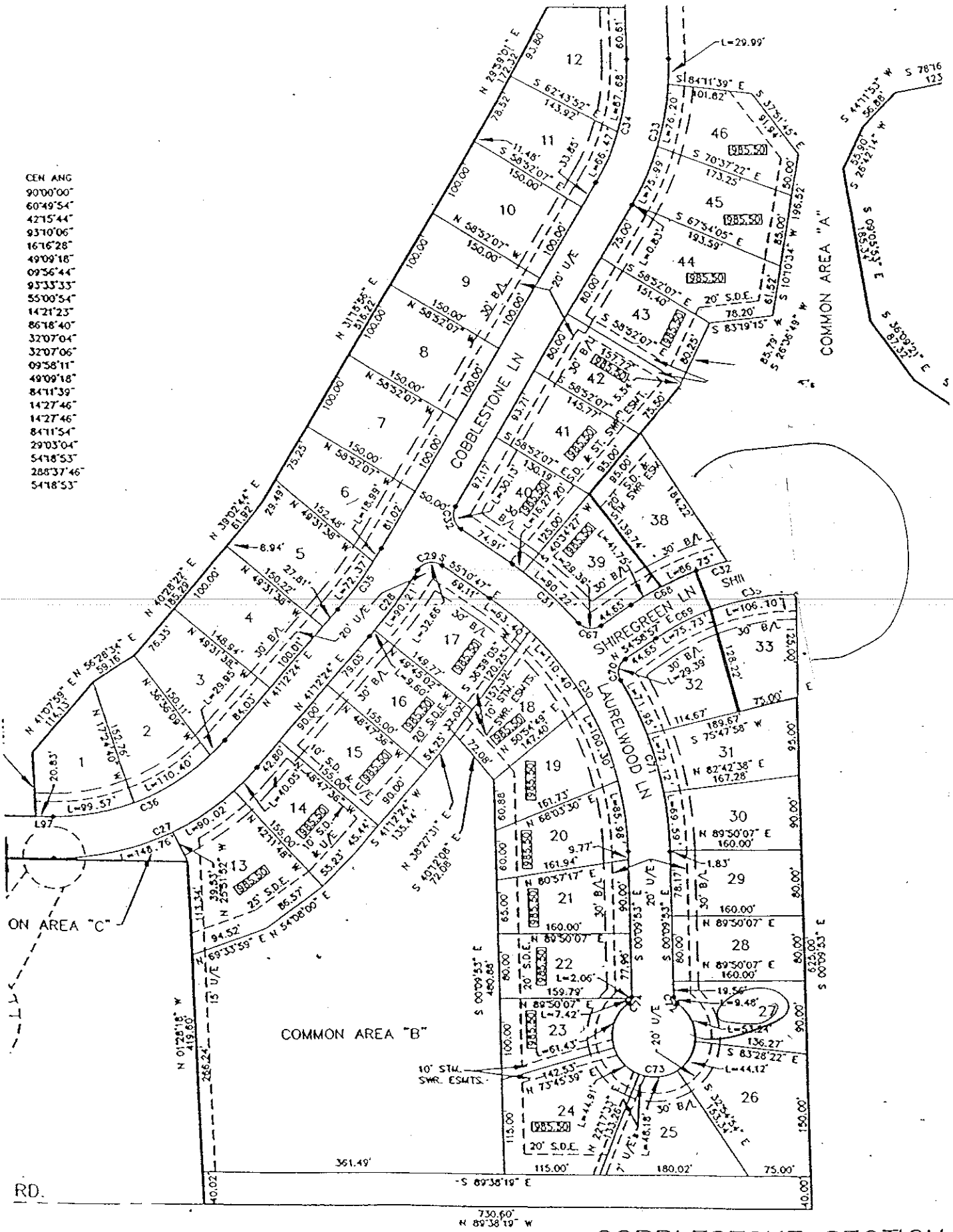
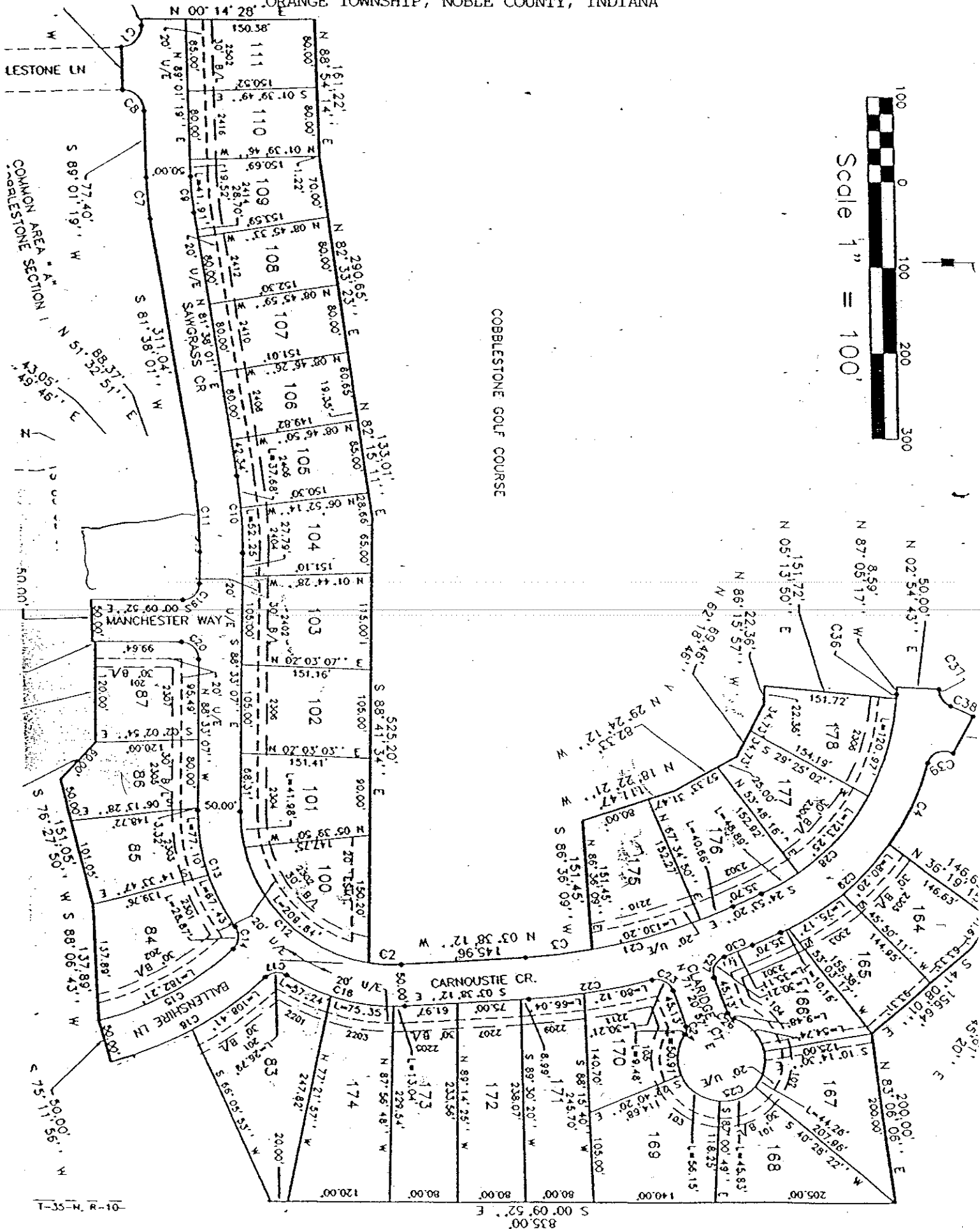


GEN ANG
 90°00'00"
 60°49'54"
 42°15'44"
 93°10'06"
 16°16'28"
 49°09'18"
 09°56'44"
 93°33'33"
 55°00'54"
 14°21'23"
 86°16'40"
 32°07'04"
 32°07'06"
 09°58'11"
 49°09'18"
 84°11'39"
 14°27'46"
 14°27'46"
 84°11'54"
 29°03'04"
 54°18'53"
 288°37'46"
 54°18'53"



COBBLESTONE, SECTION II

ORANGE TOWNSHIP, NOBLE COUNTY, INDIANA

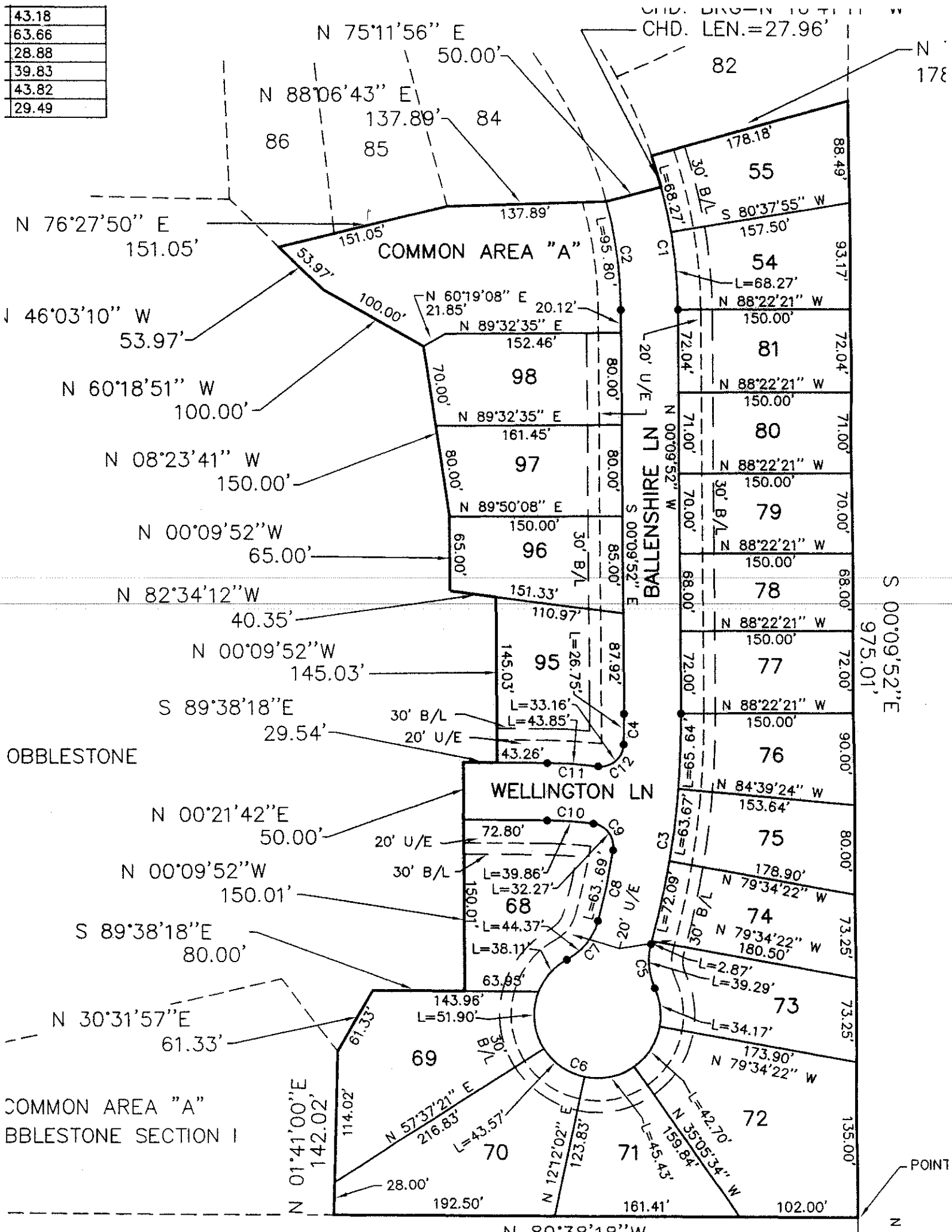


COBBLESTONE GOLF COURSE

Scale 1" = 100'



43.18
63.66
28.88
39.83
43.82
29.49



COMMON AREA "A"
BBLESTONE SECTION I

POINT

N 00°20'10" W