

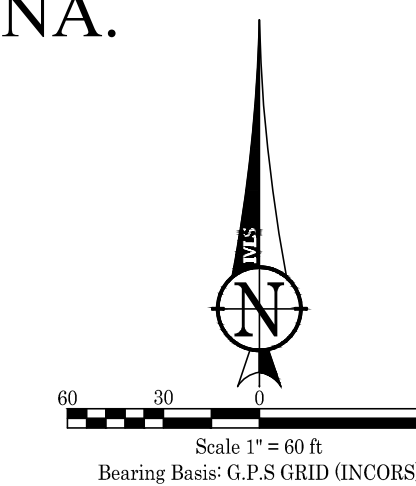
# SECONDARY PLAT (Page 1 of 2)

## Buckner's Crossing Section 4

A SUBDIVISION BEING A PART OF THE NORTHEAST QUARTER & NORTHWEST QUARTERS OF SECTION 31, TOWNSHIP 31 N, RANGE 12 E, & SOUTHWEST QUARTER OF SECTION 30, TOWNSHIP 31 N, RANGE 12 E WASHINGTON TWP., ALLEN CO., INDIANA.

Curve Table					
Curve #	Length	Radius	Delta	Chord Bearing	Chord Length
C1	73.93'	150.00'	028°14'23"	S34°25'24"W	73.19'
C2	128.44'	150.00'	049°03'40"	S24°00'45"W	124.55'
C3	55.37'	150.00'	021°08'54"	S78°20'37"E	55.05'
C4	176.33'	150.00'	067°21'05"	S34°11'38"E	166.35'
C5	123.16'	150.00'	047°02'39"	S23°00'14"W	119.73'
C6	116.39'	150.00'	044°27'22"	S68°45'15"W	113.49'
C7	35.05'	150.00'	013°23'12"	N50°10'02"W	34.97'
C8	231.69'	150.00'	088°29'59"	S44°40'05"E	209.34'
C9	239.55'	150.00'	091°30'01"	S45°13'55"W	214.89'
C10	23.10'	20.00'	066°10'41"	N87°32'37"W	21.84'
C11	67.87'	175.00'	022°13'12"	S70°28'39"W	67.44'
C12	28.69'	175.00'	009°23'41"	S80°17'05"W	28.66'
C13	199.62'	125.00'	091°30'01"	S45°13'55"W	179.08'
C14	30.89'	20.00'	088°29'59"	S44°40'05"E	27.91'
C15	31.94'	20.00'	091°30'01"	S45°13'55"W	28.65'
C16	193.08'	125.00'	088°29'59"	S44°40'05"E	174.45'
C17	31.94'	20.00'	091°30'01"	S45°13'55"W	28.65'
C18	13.70'	175.00'	004°29'04"	S01°43'27"W	13.69'
C19	71.55'	175.00'	023°25'32"	S15°40'45"W	71.05'
C20	64.60'	175.00'	021°09'05"	S37°58'03"W	64.24'
C21	72.05'	175.00'	023°35'17"	S32°05'51"W	71.54'
C22	14.21'	175.00'	004°39'06"	S46°13'03"W	14.20'
C23	12.70'	125.00'	005°49'12"	S45°37'59"W	12.69'
C24	94.34'	125.00'	043°14'28"	S21°06'09"W	92.11'
C25	30.89'	20.00'	088°29'59"	S44°40'05"E	27.91'
C26	23.84'	175.00'	007°48'21"	S85°06'54"E	23.82'
C27	26.76'	20.00'	076°39'27"	N60°27'33"E	24.81'

Line Table		
Line #	Length	Direction
L1	1.22'	N52°42'21"W
L2	14.73'	N43°28'26"W



### MONUMENT LEGEND

- A = 5/8"x24" Steel Rebar with "Miller Firm #0095" id. Cap Set (Flush)
- B = 5/8" Steel Rebar with "Kars" id. Cap Found 0.13' E & 0.22' N of Actual (Flush)
- C = 5/8" Steel Rebar with "Kars" id. Cap Found 0.22' E & 0.31' N of Actual (Flush)
- D = 5/8" Steel Rebar with "Kars" id. Cap Found 0.39' E of Actual (Flush)
- F = 5/8" Steel Rebar with "Kars" id. Cap Found (Flush)

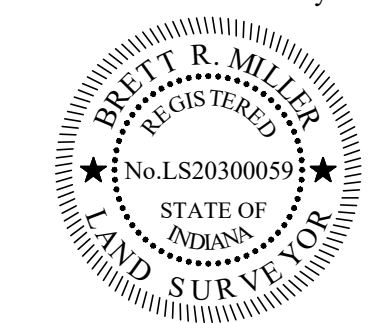
**Developer:** Buckner Developers L.L.C., Suite 800, Fort Wayne, IN 46802

**LEGEND:**  
 B/L - Building Line  
 U.&S.D.E. - Utility & Surface Drainage Easement  
 U.&R.D.E. - Utility & Regulated Drainage Easement  
 U/E - Utility Easement  
 #XXXX - Address  
 XXX.XX FPG - Flood Protection Grade

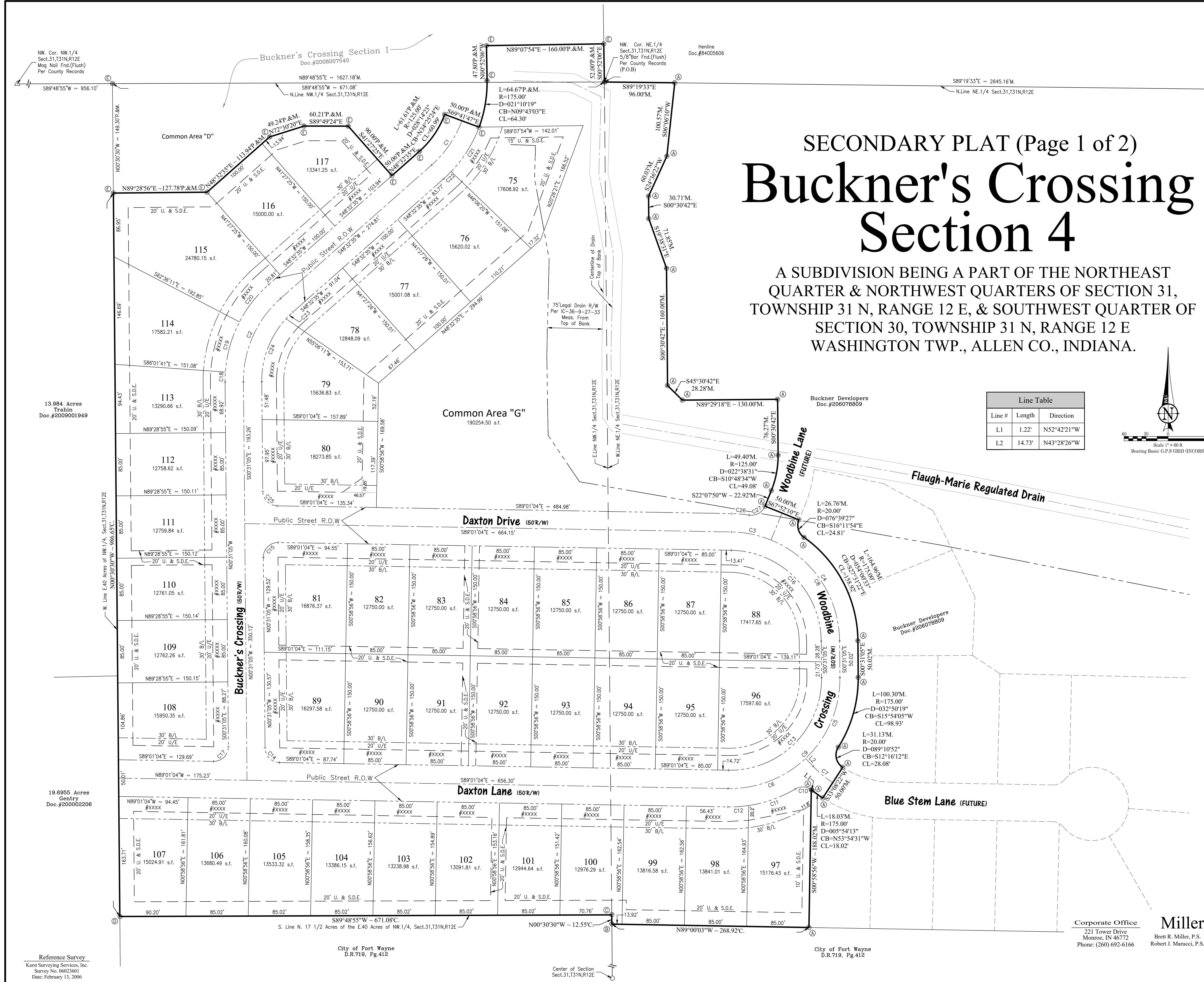
### CERTIFICATION

I, Brett R. Miller, hereby certify that I am a Land Surveyor, licensed in compliance with the laws of the State of Indiana; that this plat correctly represents a survey conducted under my supervision in accordance with Title 865 IAC, Article 1, Rule 12, Sections 1 thru 29, and that the survey upon which this plat is based has been recorded in Document Number XXXXXXXXXXXX in the Office of the Recorder of Allen County, Indiana; that all markers thereon will be installed in accordance with the provisions of the Platting Ordinance; and that their location, size, type and material are accurately shown.

**PRELIMINARY**  
 Brett R. Miller, PLS Date



Plat Prepared By: **Miller Land Surveying, Inc.**  
 221 Tower Drive, Monroe, IN 46772, Phone: (260) 692-6166  
 Brett R. Miller, P.S. No. LS20300059, Robert J. Marucci, P.S. No. LS20400028  
 www.mlswebsite.us  
**MS**  
 Precision and Professionalism is where we draw the line.  
 Fort Wayne Office: 217 Airport North Office Park, Fort Wayne, IN 46825, Phone: (260) 489-8571



Reference Survey  
 Karst Surveying Services, Inc.  
 Survey No. 06023601  
 Date: February 13, 2006

City of Fort Wayne  
 D.R. 719, Pg. 412

Center of Section  
 Sect. 31, T31N, R12E

City of Fort Wayne  
 D.R. 719, Pg. 412

Corporate Office  
 221 Tower Drive  
 Monroe, IN 46772  
 Phone: (260) 692-6166

Fort Wayne Office  
 217 Airport North Office Park  
 Fort Wayne, IN 46825  
 Phone: (260) 489-8571