

N 00°16'27" W
S 00°16'27" E
481.06'

NE COR. NW 1/4,
SE 9, T 33 N., R. 13 E.,
2nd P.M. DEKALB CO., IN

E. LINE NW 1/4, SEC. 9-33-13
CENTER OF SEC 9
TWP 33 N., R 13 E.
STONE FND

CURVE	RADIUS	ARC LENGTH	CHORD LENGTH	CHORD BEARING	DELTA ANGLE
C1	255.00'	74.09'	73.83'	S 00°07'04" W	16°38'48"
C2	255.00'	73.63'	73.38'	S 16°42'48" W	16°32'41"
C3	255.00'	69.43'	69.22'	S 32°47'09" W	15°36'00"
C4	255.00'	56.34'	56.22'	S 46°54'55" W	12°39'31"
C5	180.00'	82.73'	82.00'	S 88°23'02" W	26°19'57"
C6	180.00'	26.55'	26.52'	S 85°46'30" W	08°27'00"
C9	120.00'	76.98'	76.67'	S 71°37'20" W	36°45'20"
C10	195.00'	110.53'	109.06'	S 37°00'23" W	32°28'35"
C11	195.00'	24.37'	24.35'	N 12°45'01" W	07°09'35"
C12	195.00'	126.26'	124.07'	S 02°13'08" W	37°05'53"
C13	180.00'	6.20'	6.20'	N 84°13'52" E	1°58'23"



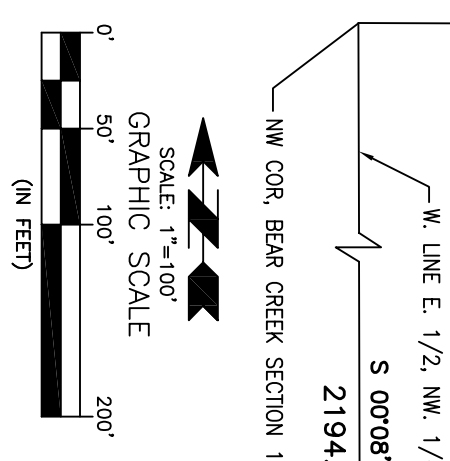
COMMON AREA "D"
12151.33 SQ. FT.

NE COR. BEAR CREEK SEC. I
DR. PLAT, PG. 96

N 89°47'00" W
690.89' MEA
N. LINE NW 1/4, SEC. 9-33-13

N 89°47'00" W
620.00'
N. LINE NW 1/4, SEC. 9-33-13

LOT #	AREA
96	11263
97	11432
98	11430
99	11333
100	10400
101	10400
102	10404
103	13438
104	12820
105	11200
106	14687
107	11200
108	11200
109	11200
110	11200
111	11200
112	11200
113	11200
114	11200
119	14076
120	14093
130	13090
131	13090
132	11600
133	13313
134	11206
135	16518
136	11600
137	11600
138	11600
139	11600



DRAWN BY:	AVJ
FIELD CREW:	RCW, AVJ, DJS
DATE:	3/25/2015
CLIENT:	SOUTHWEST DEVELOPMENT

APPROVED BY:	RCW
PROJ. NO.:	1-PLAT Sec V.dwg
DWG.:	1-PLAT Sec V.dwg

REBAR FOUND	PK/MAE WALL FOUND	WHEN TYP N/E/L	STORM INLET	CABLE RISER
REBAR SET	PK/MAE WALL SET	WATER WALK	CHUB INLET	ELECTRIC RISER
PIPE FOUND	R.R. SPOKE FOUND	R.R. SPOKE FOUND	R.R. SPOKE FOUND	R.R. SPOKE FOUND
HARDENED WALKER	BRASS PIN	BRASS PIN	BRASS PIN	BRASS PIN
HARDENED WALKER	CHISELED X	CHISELED X	CHISELED X	CHISELED X
RAIL POST	FIRE HYDRANT	FIRE HYDRANT	FIRE HYDRANT	FIRE HYDRANT
	WHOLE	WHOLE	WHOLE	WHOLE
	TEL RISER	TEL RISER	TEL RISER	TEL RISER

REBAR FOUND	PK/MAE WALL FOUND	WHEN TYP N/E/L	STORM INLET	CABLE RISER
REBAR SET	PK/MAE WALL SET	WATER WALK	CHUB INLET	ELECTRIC RISER
PIPE FOUND	R.R. SPOKE FOUND	R.R. SPOKE FOUND	R.R. SPOKE FOUND	R.R. SPOKE FOUND
HARDENED WALKER	BRASS PIN	BRASS PIN	BRASS PIN	BRASS PIN
HARDENED WALKER	CHISELED X	CHISELED X	CHISELED X	CHISELED X
RAIL POST	FIRE HYDRANT	FIRE HYDRANT	FIRE HYDRANT	FIRE HYDRANT
	WHOLE	WHOLE	WHOLE	WHOLE
	TEL RISER	TEL RISER	TEL RISER	TEL RISER

REBAR FOUND	PK/MAE WALL FOUND	WHEN TYP N/E/L	STORM INLET	CABLE RISER
REBAR SET	PK/MAE WALL SET	WATER WALK	CHUB INLET	ELECTRIC RISER
PIPE FOUND	R.R. SPOKE FOUND	R.R. SPOKE FOUND	R.R. SPOKE FOUND	R.R. SPOKE FOUND
HARDENED WALKER	BRASS PIN	BRASS PIN	BRASS PIN	BRASS PIN
HARDENED WALKER	CHISELED X	CHISELED X	CHISELED X	CHISELED X
RAIL POST	FIRE HYDRANT	FIRE HYDRANT	FIRE HYDRANT	FIRE HYDRANT
	WHOLE	WHOLE	WHOLE	WHOLE
	TEL RISER	TEL RISER	TEL RISER	TEL RISER

REBAR FOUND	PK/MAE WALL FOUND	WHEN TYP N/E/L	STORM INLET	CABLE RISER
REBAR SET	PK/MAE WALL SET	WATER WALK	CHUB INLET	ELECTRIC RISER
PIPE FOUND	R.R. SPOKE FOUND	R.R. SPOKE FOUND	R.R. SPOKE FOUND	R.R. SPOKE FOUND
HARDENED WALKER	BRASS PIN	BRASS PIN	BRASS PIN	BRASS PIN
HARDENED WALKER	CHISELED X	CHISELED X	CHISELED X	CHISELED X
RAIL POST	FIRE HYDRANT	FIRE HYDRANT	FIRE HYDRANT	FIRE HYDRANT
	WHOLE	WHOLE	WHOLE	WHOLE
	TEL RISER	TEL RISER	TEL RISER	TEL RISER

REBAR FOUND	PK/MAE WALL FOUND	WHEN TYP N/E/L	STORM INLET	CABLE RISER
REBAR SET	PK/MAE WALL SET	WATER WALK	CHUB INLET	ELECTRIC RISER
PIPE FOUND	R.R. SPOKE FOUND	R.R. SPOKE FOUND	R.R. SPOKE FOUND	R.R. SPOKE FOUND
HARDENED WALKER	BRASS PIN	BRASS PIN	BRASS PIN	BRASS PIN
HARDENED WALKER	CHISELED X	CHISELED X	CHISELED X	CHISELED X
RAIL POST	FIRE HYDRANT	FIRE HYDRANT	FIRE HYDRANT	FIRE HYDRANT
	WHOLE	WHOLE	WHOLE	WHOLE
	TEL RISER	TEL RISER	TEL RISER	TEL RISER

REBAR FOUND	PK/MAE WALL FOUND	WHEN TYP N/E/L	STORM INLET	CABLE RISER
REBAR SET	PK/MAE WALL SET	WATER WALK	CHUB INLET	ELECTRIC RISER
PIPE FOUND	R.R. SPOKE FOUND	R.R. SPOKE FOUND	R.R. SPOKE FOUND	R.R. SPOKE FOUND
HARDENED WALKER	BRASS PIN	BRASS PIN	BRASS PIN	BRASS PIN
HARDENED WALKER	CHISELED X	CHISELED X	CHISELED X	CHISELED X
RAIL POST	FIRE HYDRANT	FIRE HYDRANT	FIRE HYDRANT	FIRE HYDRANT
	WHOLE	WHOLE	WHOLE	WHOLE
	TEL RISER	TEL RISER	TEL RISER	TEL RISER



OWNER/DEVELOPER:
SOUTHWEST DEVELOPMENT OF
JACKSON TWP.
P.O. BOX 107
AUBURN, INDIANA 46706
PHONE (260) 437-1200

NOTE: ALL COMMON AREAS ARE SUBJECT TO BLANKET DRAINAGE EASEMENTS.
NOTE: ALL SETBACK LINES ARE AS FOLLOWS:
40' FRONT
30' REAR (10' FOR ACCESSORY BLDGS.)
10' SIDE

ALL LOT CORNERS, BREAK POINTS AND POINTS OF CURVATURE ARE TO BE MONUMENTED WITH #5 REBARS WITH YELLOW PLASTIC I.D. CAPS MARKED WEBER 20800107. AFTER ALL UTILITIES ARE IN PLACE AND FINAL GRADING IS COMPLETE.

NOTE: ALL EASEMENTS LABELED U.E. ARE UTILITY AND DRAINAGE EASEMENTS.
NOTE: MINIMUM FLOOD PROTECTION GRADES (WHERE REQUIRED) ARE SHOWN AS [XXXX]

PLAT BENCHMARK #110 NORTH BENCHMARK OF FIRE HYDRANT CLOSE TO CORNER OF LOTS 143 & 144 IN BEAR CREEK SECTION II. ELEVATION = 882.35
PLAT BENCHMARK #109 NORTH BENCHMARK OF FIRE HYDRANT CLOSE TO CORNER OF LOTS 140 & 141 IN BEAR CREEK SECTION II. ELEVATION = 889.78
PLAT BENCHMARK #108 NORTH BENCHMARK OF FIRE HYDRANT CLOSE TO CORNER OF LOTS 124 & 125 IN BEAR CREEK SECTION III. ELEVATION = 882.60
PLAT BENCHMARK #106 NORTH BENCHMARK OF FIRE HYDRANT CLOSE TO CORNER OF LOTS 124 & 125 IN BEAR CREEK SECTION III. ELEVATION = 883.88
SECTION V 232584.3 SQ. FT. 5.34 ACRES ±